



## DS4800

### QUICK REFERENCE GUIDE

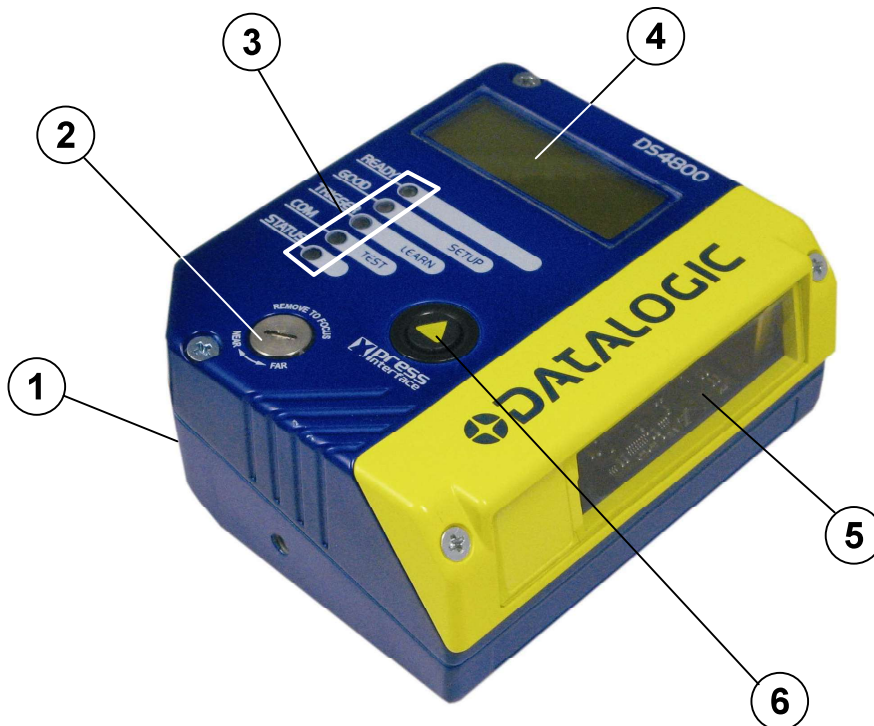


Figure A

- |                    |                            |
|--------------------|----------------------------|
| ① "POWER ON" LED   | ④ Display                  |
| ② Focus Adjustment | ⑤ Laser Beam Output Window |
| ③ Indicator LEDs   | ⑥ Push Button              |



**NOTE**

*This manual illustrates a Stand Alone application. For other types of installations, such as ID-NET™, Pass-Through, Multiplexer Layout, etc. and for a complete scanner configuration using Genius™ configuration program, refer to the DS4800 Reference Manual available on the CD. This manual is also downloadable from the Web at [www.automation.datalogic.com/ds4800](http://www.automation.datalogic.com/ds4800).*



**BSR idware GmbH**  
Jakob-Haringer-Str.3  
A-5020 Salzburg  
<https://www.bsr.at>  
[sales@bsr.at](mailto:sales@bsr.at)

## UPDATES AND LANGUAGE AVAILABILITY

---

### UK/US

The latest drivers and documentation updates for this product are available on Internet.  
Log on to: [www.automation.datalogic.com](http://www.automation.datalogic.com)

### I

Su Internet sono disponibili le versioni aggiornate di driver e documentazione di questo prodotto. Questo manuale è disponibile anche nella versione italiana.  
Collegarsi a: [www.automation.datalogic.com](http://www.automation.datalogic.com)

### F

Les versions mises à jour de drivers et documentation de ce produit sont disponibles sur Internet. Ce manuel est aussi disponible en version française.  
Cliquez sur : [www.automation.datalogic.com](http://www.automation.datalogic.com)

### D

Im Internet finden Sie die aktuellsten Versionen der Treiber und Dokumentation von diesem Produkt. Die deutschsprachige Version dieses Handbuchs ist auch verfügbar.  
Adresse : [www.automation.datalogic.com](http://www.automation.datalogic.com)

### E

En Internet están disponibles las versiones actualizadas de los drivers y documentación de este producto.  
También está disponible la versión en español de este manual.  
Dirección Internet : [www.automation.datalogic.com](http://www.automation.datalogic.com)

## SERVICES AND SUPPORT

---

Datalogic provides several services as well as technical support through its website. Log on to [www.automation.datalogic.com](http://www.automation.datalogic.com) and click on the links indicated for further information including:

- **PRODUCTS**

Search through the links to arrive at your product page where you can download specific **Manuals** and **Software & Utilities** including:

- **Genius™** a utility program, which allows device configuration using a PC. It provides RS232 interface configuration.

- **SERVICES & SUPPORT**

- **Datalogic Services** - Warranty Extensions and Maintenance Agreements
- **Authorised Repair Centres**

- **CONTACT US**

E-mail form and listing of Datalogic Subsidiaries

## STEP 1 – CONNECT THE SYSTEM

To connect the system in a Stand Alone configuration, you need the hardware indicated in Figure 1. In this layout the data is transmitted to the Host on the main serial interface. In Local Echo communication mode, the RS232 auxiliary interface can be used to transmit data independently from the main interface selection. When On-Line Operating mode is used, the scanner is activated by an External Trigger (photoelectric sensor) when the object enters its reading zone.

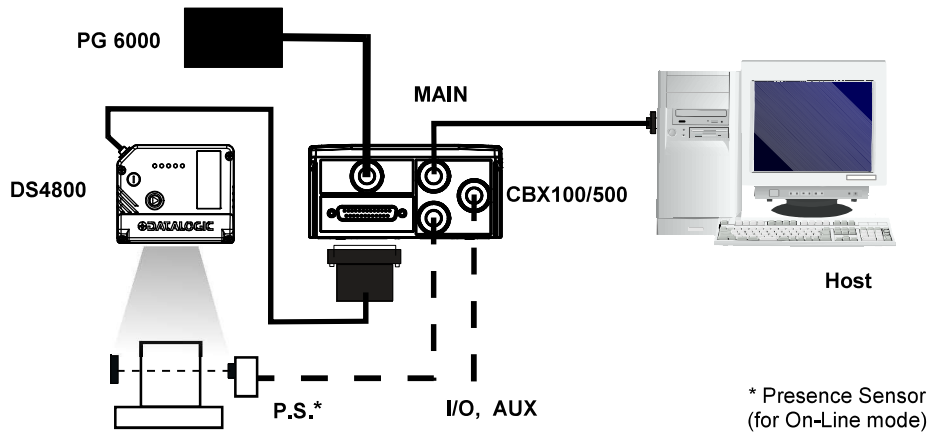


Figure 1 – DS4800 in Stand Alone Layout

### CBX100/500 Pinout for DS4800

The table below gives the pinout of the CBX100/500 terminal block connectors. Use this pinout when the DS4800 reader is connected by means of the CBX100/500:

CBX100/500 Terminal Block Connectors			
Power		Outputs	
Vdc	Power Supply Input Voltage +	+V	Power Source - Outputs
GND	Power Supply Input Voltage -	-V	Power Reference - Outputs
Earth	Protection Earth Ground	O1+	Output 1 +
		O1-	Output 1 -
		O2+	Output 2 +
		O2-	Output 2 -
Inputs		Auxiliary Interface	
+V	Power Source – External Trigger	TX	Auxiliary Interface TX
I1A	External Trigger A (polarity insensitive)	RX	Auxiliary Interface RX
I1B	External Trigger B (polarity insensitive)	SGND	Auxiliary Interface Reference
-V	Power Reference – External Trigger		
+V	Power Source – Inputs	ID-NET™	
I2A	Input 2 A (polarity insensitive)	REF	Network Reference
I2B	Input 2 B (polarity insensitive)	ID+	ID-NET™ network +
-V	Power Reference – Inputs	ID-	ID-NET™ network -
Shield			
Shield	Network Cable Shield		
Main Interface			
	RS232	RS485 Full-Duplex	RS485 Half-Duplex
	TX	TX+	RTX+
	RTS	TX-	RTX-
	RX	*RX+	
	CTS	*RX-	
	SGND	SGND	SGND

\* Do not leave floating, see Reference Manual for connection details.



**CAUTION**

Do not connect GND, SGND and REF to different (external) ground references. GND, SGND and REF are internally connected through filtering circuitry which can be permanently damaged if subjected to voltage drops over 0.8 Vdc.

## 25-pin Connector Pinout for DS4800

The table below gives the pinout of the 25-pin male D-sub connector for connection to the power supply and input/output signals. Use this pinout when the DS4800 reader is connected by means of the 25-pin connector:

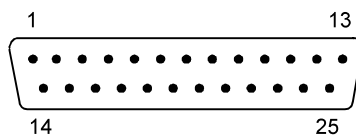


Figure 2 - 25-pin Male D-sub Connector

25-pin D-sub male connector pinout				
Pin	Name	Function		
13, 9 25, 7 1	Vdc GND CHASSIS	Power supply input voltage + Power supply input voltage - Cable shield connected to chassis		
18 19 6 10	I1A I1B I2A I2B	External Trigger A (polarity insensitive) External Trigger B (polarity insensitive) Input 2 A (polarity insensitive) Input 2 B (polarity insensitive)		
8 22 11 12	O1+ O1- O2+ O2-	Output 1 + Output 1 - Output 2 + Output 2 -		
20 21	RX TX	Auxiliary RS232 RX Auxiliary RS232 TX		
23 24	ID+ ID-	ID-NET™ network + ID-NET™ network -		
14, 15, 16, 17	NC	Not Connected		
Pin	Name	RS232	RS485 Full-Duplex	RS485 Half-Duplex
2	MAIN INTERFACE (SW SELECTABLE)	TX	TX+	RTX+
3		RX	*RX+	RTX-
4		RTS	TX-	
5		CTS	*RX-	

\* Do not leave floating, see Reference Manual for connection details.

## STEP 2 – MOUNT AND POSITION THE SCANNER

1. To mount the DS4800, use the mounting bracket to obtain the most suitable position for the reader as shown in the figures below.

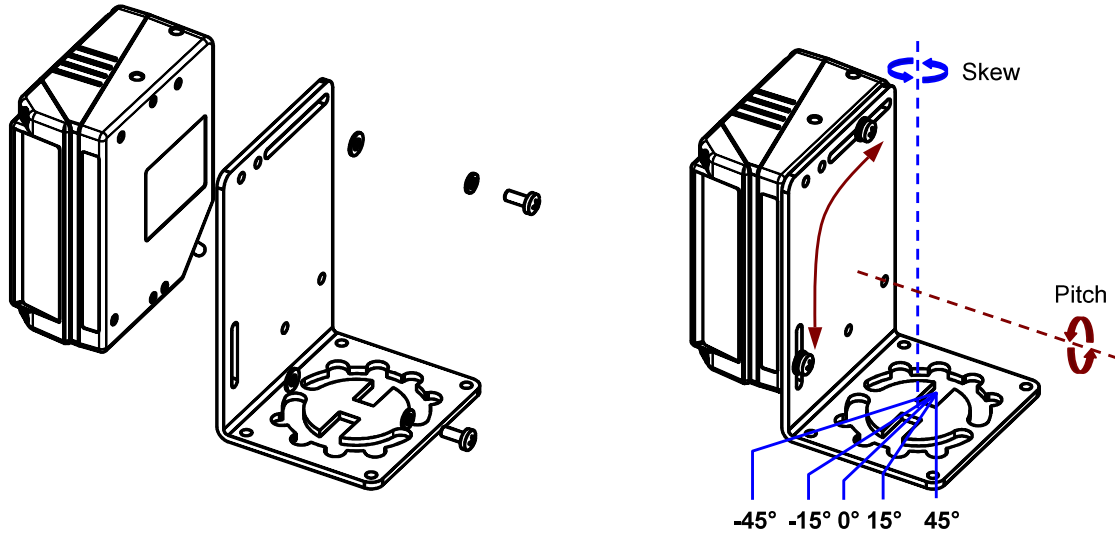


Figure 3 - Positioning with Mounting Bracket

2. When mounting the DS4800 take into consideration these three ideal label position angles: **Skew 15° to 30°**, **Tilt 0°** and **Pitch 0°**.

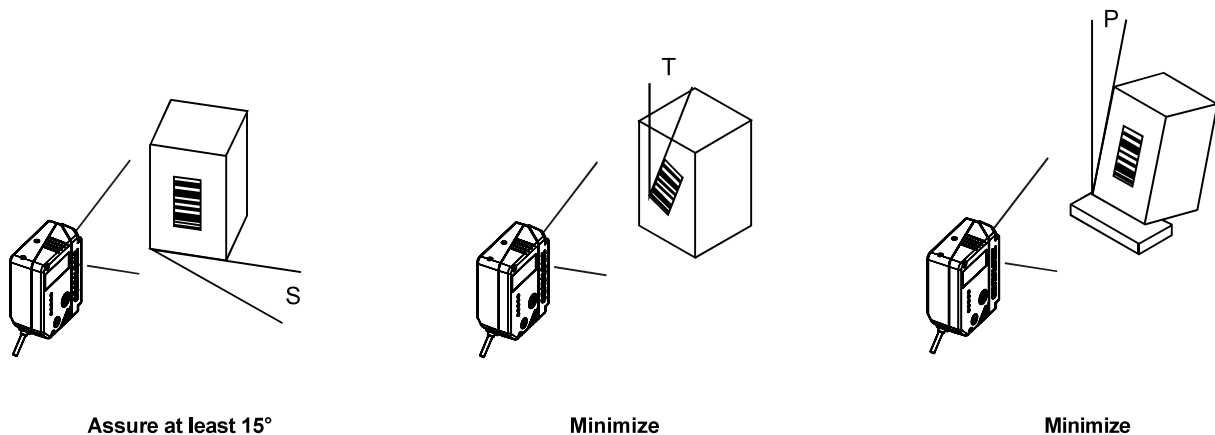



Figure 4 –Skew, Tilt and Pitch Angles

3. Refer to the Reading Diagrams in the Appendix of this Quick Reference Guide to decide the distance your scanner should be positioned at.

## STEP 3 – FOCUS THE SCANNER

The reading distance depends on the focus distance of the scanner and should be set according to the application requirements. The Focus Position is set directly through the focus adjustment screw on the front panel of the scanner. This screw moves the internal lens of the scanner to change the focal length of the scanner. The setting is continuous but should not be set beyond the limits "Too Far" or "Too Near" which appear on the display at the extremes of the focus range. Although the scanner reads across the entire focus range, there are three guaranteed positions which correspond to the reading diagrams in the Appendix of this Quick Reference Guide.

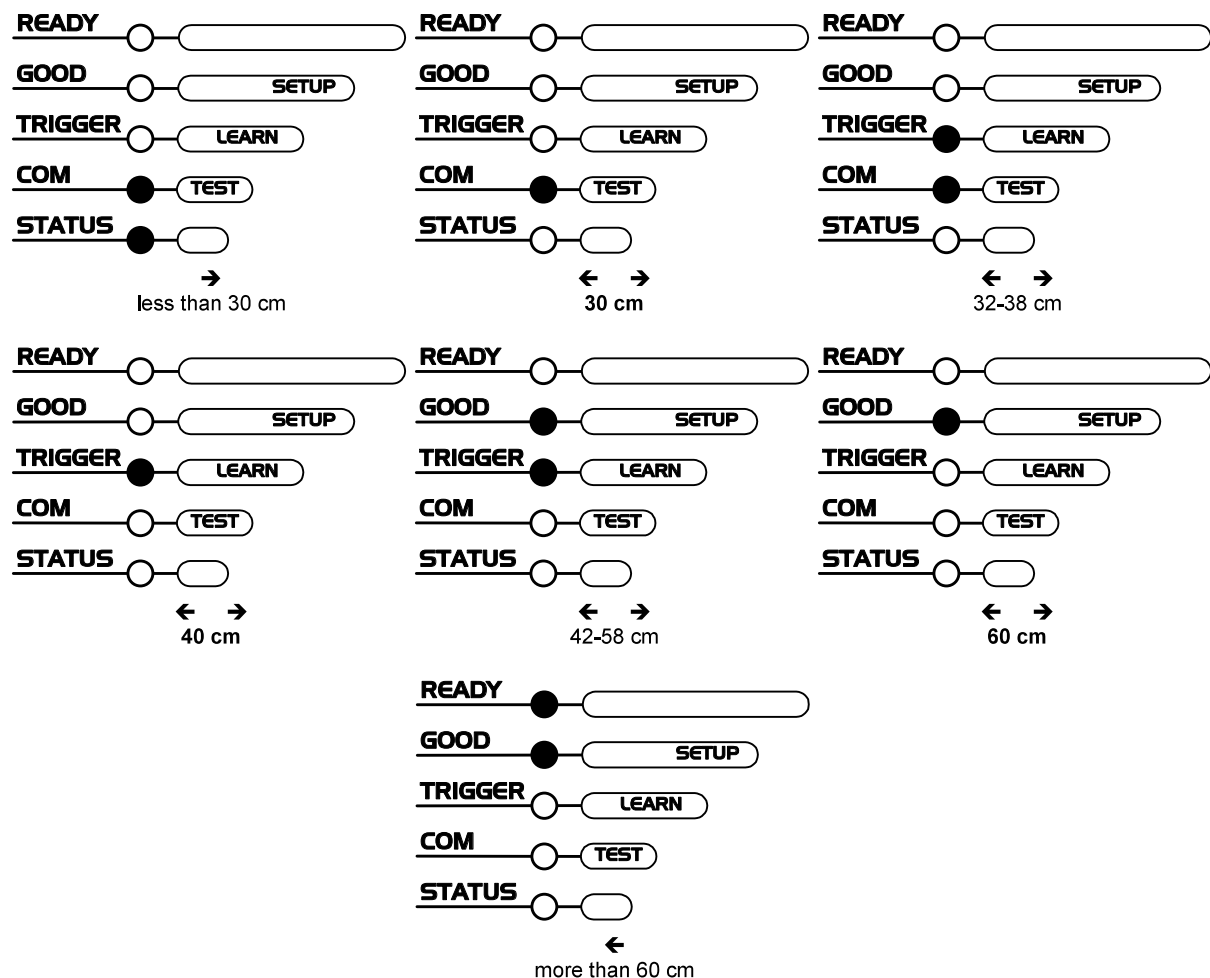
1. Power up the scanner and wait for the power up sequence to finish. The alternating message on the display shows the mechanical Focus Position.
2. Using a screwdriver turn the focus adjustment screw in the desired direction clockwise (focus nearer to the scanner) or counterclockwise (focus farther from the scanner). The focus position in centimeters and inches is shown on the scanner display.



**NOTE** The value of the Focus Position can be stored in memory. If the mechanical position changes with respect to the value in memory, an alarm will be sent. See the Focus Lock function in step 4, X-PRESS™ Configuration.



As an additional visual aid during focusing, the indicator LEDs show the relative focus position as follows:



## STEP 4 – X-PRESS™ CONFIGURATION

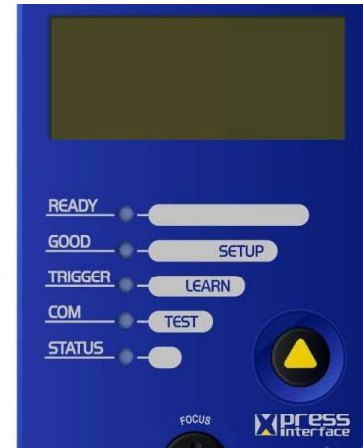
X-PRESS™ is the intuitive Human Machine Interface designed to improve ease of installation and maintenance.

Status and diagnostic information are clearly presented on the display (which can be configured in various languages) and by means of the five colored LEDs, whereas the single push button gives immediate access to the following relevant functions:

- *AutoSetup* to self-optimize and auto-configure reading performance in demanding applications
- *AutoLearn* to self-detect and auto-configure for reading unknown barcodes (by type and length)
- *Focus Lock* to memorize the mechanical focus position
- *Test Mode with bar-graph visualization* to check static reading performance

The colors and meaning of the five LEDs are illustrated in the following table:

READY (green)	This LED indicates the device is ready to operate.
GOOD (green)	This LED confirms successful reading.
TRIGGER (yellow)	This LED indicates the status of the reading phase.
COM (yellow)	This LED indicates active communication on main serial port.
STATUS (red)	This LED indicates a NO READ result.



During the reader startup (reset or restart phase), all the LEDs blink for one second.

On the back of the reader near the cable, the “POWER ON” LED indicates the laser scanner is correctly powered.

### AUTO LEARN

If you are configuring your scanner using X-PRESS™, you must start with the *Auto Learn* procedure.

1. Enter the *Auto Learn* function by holding the X-PRESS™ push button pressed until the LEARN LED is on.
2. Release the button to enter the *Auto Learn* function.  
Once entered, the reader starts a procedure to automatically detect and recognize barcodes (by type and length), which are presented to it (\*). The laser turns on and the LEARN LED blinks to indicate the ongoing process.

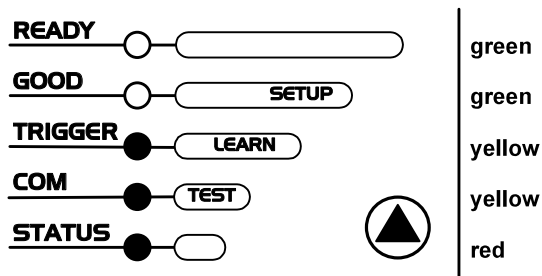


Figure 5 – X-PRESS™ Interface: Auto Learn Function

The procedure is as follows:

- A) **place** the desired barcode on the scanline.
- B) **wait** until the LEARN LED stays steady on (indicating the reader has detected the barcode).
- C) **repeat**, if needed, the above two steps to program up to 10 different barcodes (either by length or by symbology). If more than one barcode is detected, the Multi Label mode is enabled (refer to the “2K/4K Family Software Configuration Parameter Guide” Help file).

3. **Exit** the process by pressing the X-PRESS™ push button once. The scanner will restart at the end of the process, and then the detected barcodes are automatically configured in scanner memory.



#### NOTE

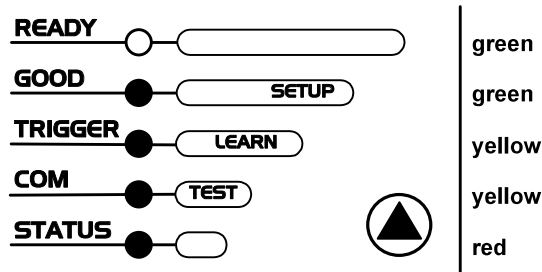
*If the barcode cannot be read because of low contrast or excessive ambient light, you can perform the AutoSetup function to optimize the optical parameters. Then you can perform AutoLearn to recognize the barcode symbology.*

\* In case of Programming Barcodes, refer to the “ID-NET™ Programming Barcodes And Setup Procedure” document in the product CD.

## AUTO SETUP (OPTIONAL)

At the end of the *Auto Learn* procedure, you can perform the *Auto Setup* procedure to set up the reading parameters.

1. Enter the *Auto Setup* function by holding the X-PRESS™ push button pressed until the SETUP LED is on.
2. Release the button to enter the *Auto Setup* function.  
Once entered, if a barcode label is positioned in front of the scanline, the scanner automatically performs the optimal setup of the reading parameters for that specific barcode.



The procedure is as follows:

- A) **place** the desired barcode on the scanline.
- B) **enter** the AutoSetup function (the laser turns on and the SETUP LED blinks to indicate the ongoing process)
- C) **wait** until the SETUP LED stays steady on (indicating the reader has detected the barcode)

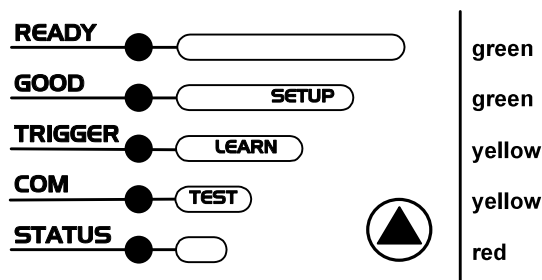
Figure 6 – X-PRESS™ Interface: Auto Setup Function

This procedure ends either when the barcode is successfully decoded or after a timeout of about 7 (seven) seconds. The scanner will restart at the end of the process, and then the optimized reading parameters for that barcode are automatically configured in scanner memory.

## FOCUS LOCK/UNLOCK (OPTIONAL)

You can perform the *Focus Lock* procedure to save the mechanical focus position to memory. If the mechanical focus position is changed with respect to the memorized value (by more than the Max. Focus Displacement value), a diagnostic alarm will be sent to the display.

1. Enter the Focus Lock function by holding the X-PRESS™ push button pressed until the FOCUS LOCK LED is on.
2. Release the button to enter the *Focus Lock* function.  
Once entered, the scanner automatically performs the Lock (saving) or Unlock procedure depending on the previous state of the Locked Position parameter.



The procedure is as follows:

- A) **enter** the Focus Lock function
- B) **wait** until the "Focus locked at..." message appears on the display (indicating the focus position has been saved to memory). The following parameters are set:
  - Locked Position = your mechanical setting
  - Max. Displacement =  $\pm 2$  cm (default)
  - Focus Displacement (Alarm) = set (default to display only)

Figure 7 – X-PRESS™ Interface: Focus Lock/Unlock Function

The scanner will restart at the end of the process.



NOTE

If your application has been configured using X-PRESS™, go to STEP 6.

## RESET SCANNER TO FACTORY DEFAULT (OPTIONAL)

If it ever becomes necessary to reset the scanner to the factory default values, you can perform this procedure by holding the X-PRESS™ push button pressed while powering up the scanner. At the end of the procedure (about 5-6 seconds), the Configuration and Environmental parameters are reset, all LEDs blink simultaneously 3 times and the message "Default Set" is shown on the display.



---

## STEP 5 – INSTALL GENIUS™ CONFIGURATION PROGRAM

---

Genius™ is a Datalogic scanner configuration tool providing several important advantages:

- Wizard approach for new users;
- Multi-language version;
- Defined configuration directly stored in the reader;
- Communication protocol independent from the physical interface allowing to consider the reader as a remote object to be configured and monitored.

To install Genius™, turn on the PC that will be used for the configuration, running Windows 98, 2000/NT or XP, then insert the Genius™ CD-ROM, wait for the CD to autorun and follow the installation procedure.

This configuration procedure assumes scanner connection to a CBX100/500. Genius™, running on a laptop computer, is connected to the scanner auxiliary port through the CBX100/500 9-pin connector.

### WIZARD FOR QUICK READER SETUP

After installing the Genius™ software program the following window appears asking the user to choose the desired configuration level.



Figure 8 - Genius™ Wizard Opening Window

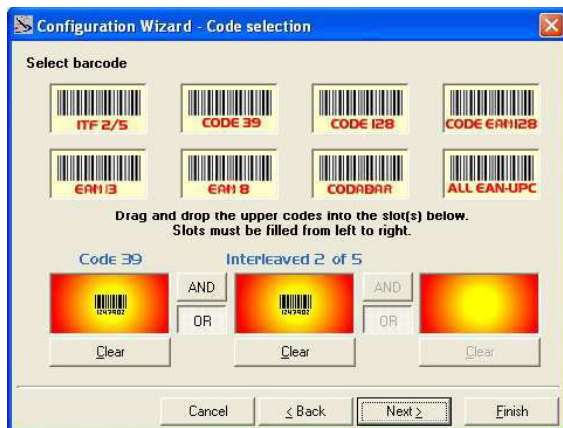
The Wizard option is advised for rapid configuration or for new users, since it shows a step-by-step scanner configuration.

1. Select the *Create a new configuration* button.

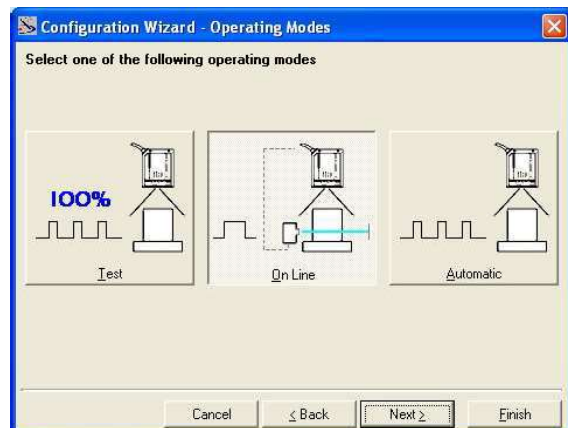


You will be guided through the configuration being asked to define the following parameters:

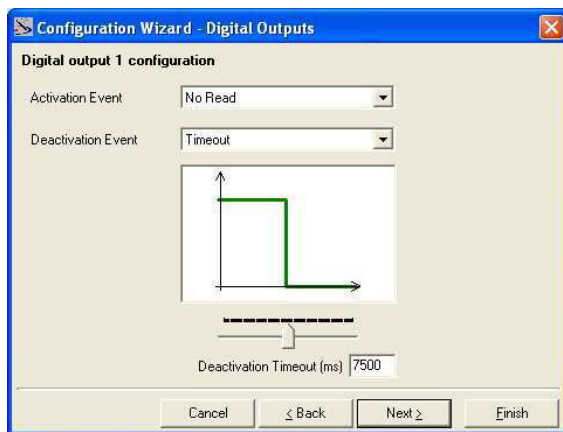
## a. Barcode selection and definition



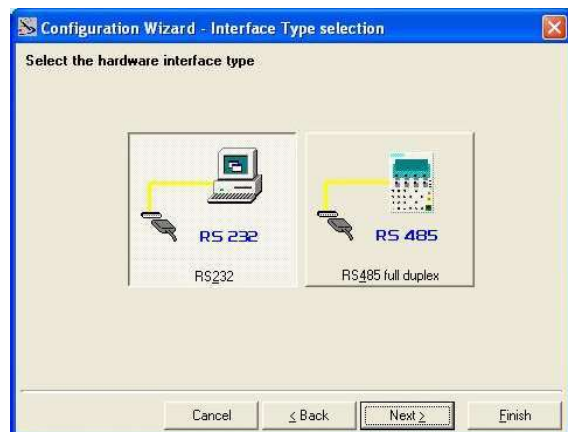
## b. Operating mode selection and definition



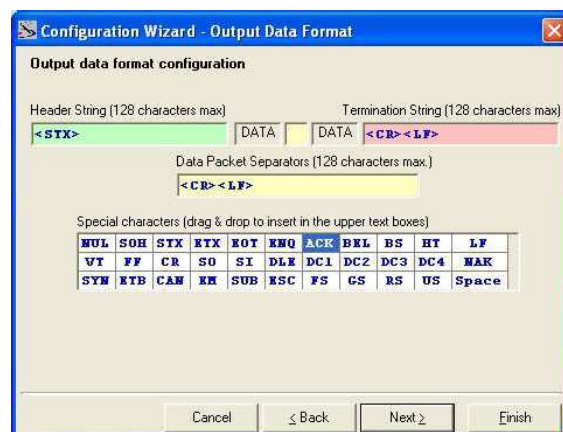
## c. Digital Outputs configuration



## d. Hardware interface selection



## e. Output data format configuration



The **On Line** operating Mode requires the reader to be connected to an External Trigger/Presence Sensor using I1A and I1B inputs.

The **Automatic** operating mode does not require connection to an external Presence Sensor. When working in this mode the reader is continuously scanning, while the reading phase is activated each time a barcode enters the reader reading zone. The reader stops reading after an N number of scans without a code. Barcode characters are transmitted on the serial interface. In case of a failed reading phase no message is sent to the host computer.

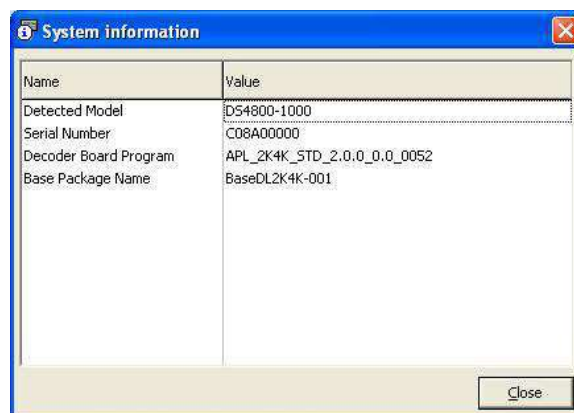
2. After defining the parameter values the following window appears allowing to complete the reader configuration as follows:
  - Saving the configuration to disk;
  - Switching to Advanced mode;
  - Sending the configuration to the scanner.



3. After sending the configuration to the scanner you have completed the configuration process.



4. By clicking Finish, the System Information window will be displayed with specific information concerning the scanner.



## STEP 6 – TEST MODE

Use a code suitable to your application to test the system. Alternatively, you can use the Datalogic Test Chart (Code 128).

1. Enter the *Test mode* function by holding the X-PRESS™ push button pressed until the TEST LED is on.
2. Release the button to enter the *Test mode* function.  
Once entered, the Bar-Graph on the five LEDs is activated and if the scanner starts reading barcodes the Bar-Graph shows the Good Read Rate. In case of no read condition, only the STATUS LED is on and blinks.

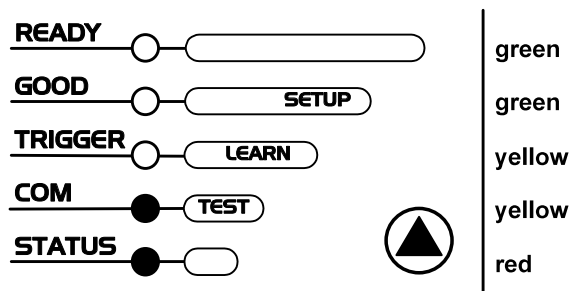


Figure 9 – X-PRESS™ Interface: Test Mode Function

3. To exit the Test Mode, press the X-PRESS™ push button once.



### NOTE

*By default, the Test Mode exits automatically after two minutes.*



**BSR idware GmbH**

Jakob-Haringer-Str.3

A-5020 Salzburg

<https://www.bsr.at>

[sales@bsr.at](mailto:sales@bsr.at)

## ADVANCED SCANNER CONFIGURATION

For further details on advanced product configuration, refer to the complete Reference Manual on the installation CD-ROM or downloadable from the web site through this link: [www.automation.datalogic.com/ds4800](http://www.automation.datalogic.com/ds4800).

The following are alternative or advanced scanner configuration methods:

### HOST MODE PROGRAMMING

The scanner can also be configured from a host computer using the Host Mode programming procedure, by commands via the serial interface. See the Host Mode Programming file on the CD-ROM.

### ADVANCED GENIUS™ CONFIGURATION

The ADVANCED selection available when starting the Genius™ program is addressed to expert users being able to complete a detailed scanner configuration. By choosing this option it is possible either to start a new scanner configuration or to open and modify an old one. The desired parameters can be defined in the following window, similar to the MS Explorer:

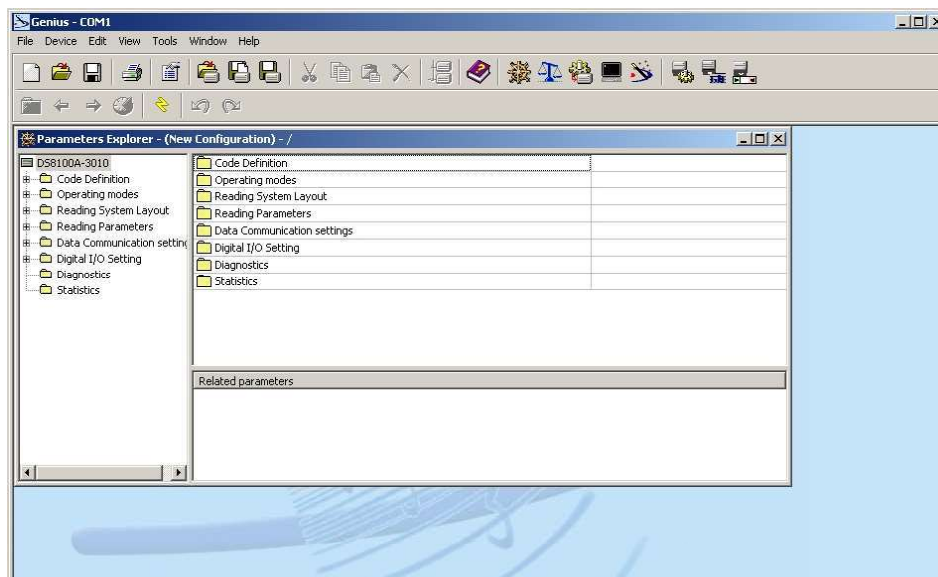


Figure 10 - Genius™ Parameter Explorer Window

### ALTERNATIVE LAYOUTS

- The ID-NET™ network is a built-in high-speed interface dedicated for high-speed scanner interconnection. ID-NET™ is in addition to the Main and Auxiliary serial interfaces.  
If you need to install an ID-NET™ network refer to the DS4800 Reference Manual.  
The scanner can also be configured by reading programming barcodes. See the ID-NET™ Setup Procedure Using Programming Barcodes printable from the CD-ROM.
- If you need to install a Pass-Through network refer to the DS4800 Reference Manual.
- If you need to install a Multiplexer network refer to the DS4800 Reference Manual.
- If you need to install an RS232 Master/Slave (for backward compatibility) refer to the DS4800 Reference Manual.

## APPENDIX

### READING DIAGRAMMS

DS4800-1000 Focus Distance 30 cm (Near)

#### CONDITIONS

Code = Code 128

PCS = 0.90

Pitch angle = 0°

Skew angle = 15°

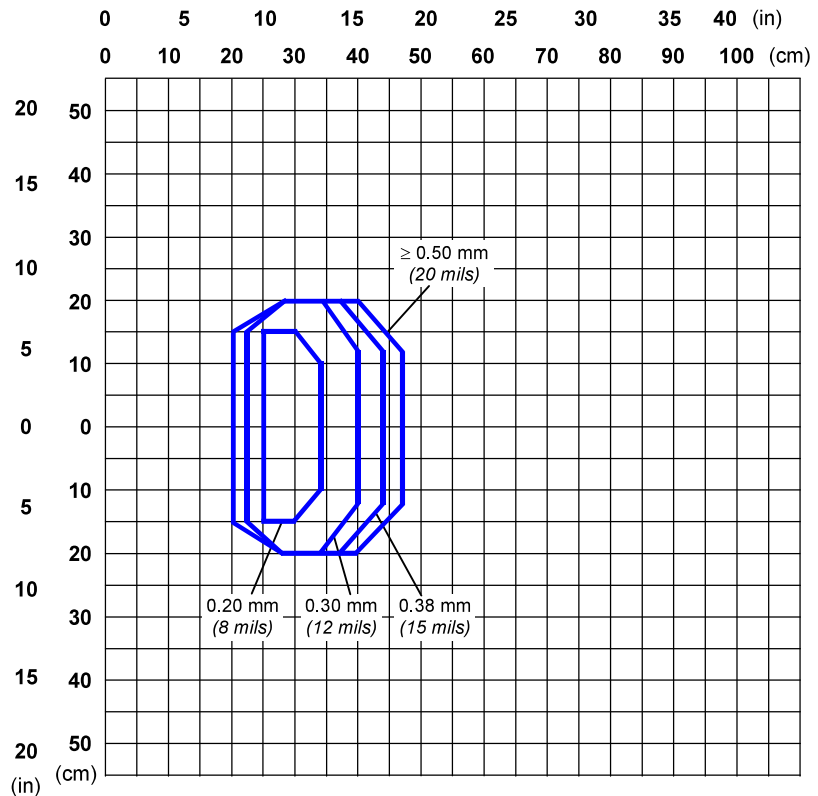
Tilt angle = 0°

\*Scan Speed = 800 scans/sec

\*Reading Conditions = Standard

\*Reading Mode = Linear

\* Parameter selectable in Genius™



BSR idware GmbH

Jakob-Haringer-Str.3

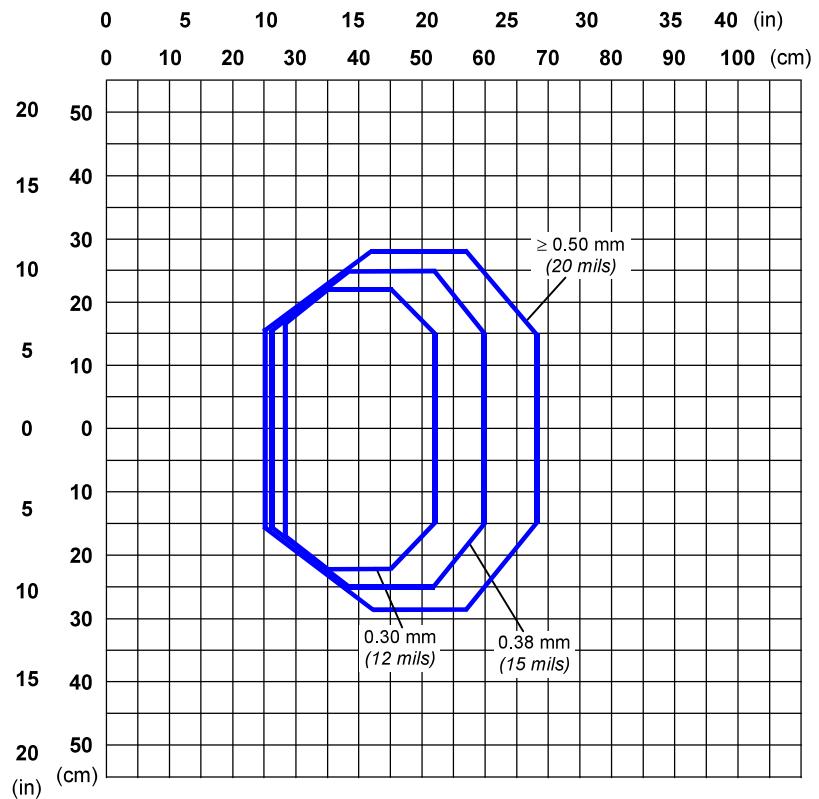
A-5020 Salzburg

<https://www.bsr.at>[sales@bsr.at](mailto:sales@bsr.at)

**DS4800-1000 Focus Distance 40 cm (Medium)****CONDITIONS**

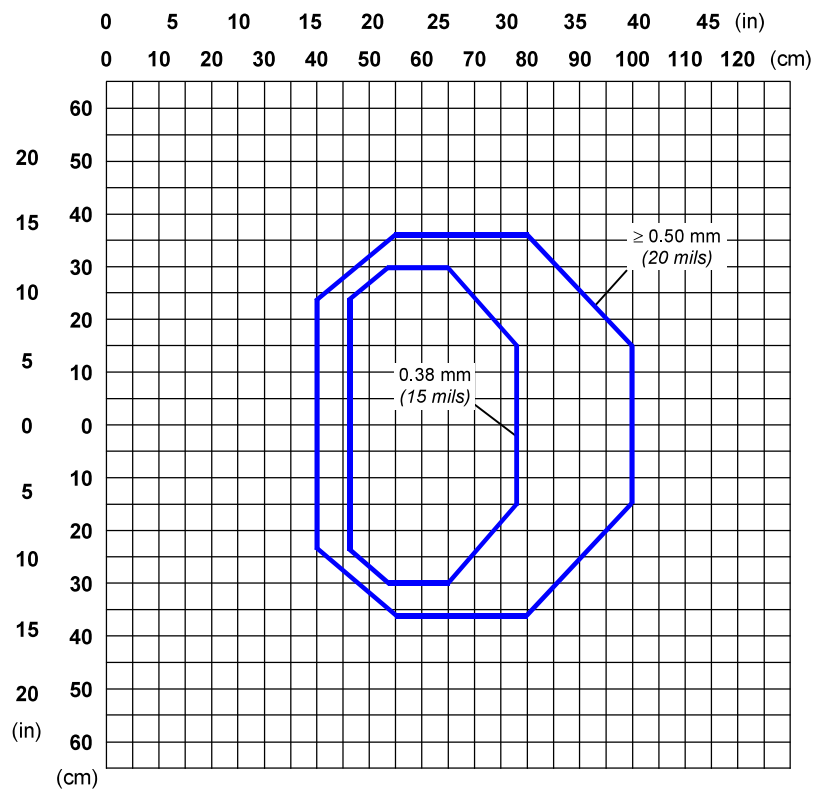
Code = Code 128  
 PCS = 0.90  
 Pitch angle = 0°  
 Skew angle = 15°  
 Tilt angle = 0°  
 \*Scan Speed = 800 scans/sec  
 \*Reading Conditions = Standard  
 \*Reading Mode = Linear

\* Parameter selectable in Genius™

**DS4800-1000 Focus Distance 60 cm (Far)****CONDITIONS**

Code = Code 128  
 PCS = 0.90  
 Pitch angle = 0°  
 Skew angle = 15°  
 Tilt angle = 0°  
 \*Scan Speed = 800 scans/sec  
 \*Reading Conditions = Standard  
 \*Reading Mode = Linear

\* Parameter selectable in Genius™



## READING PERFORMANCE

Version	Reading Distance	Max Code Resolution mm (mils)	Speed scans/s
F = 30	20 cm (7.9 in) - 47 cm (18.5 in) on 0.50 mm (20 mils) codes	0.20 (8)	800
F = 40	25 cm (9.8 in) - 68 cm (26.8 in) on 0.50 mm (20 mils) codes	0.30 (12)	800
F = 60	40 cm (16.7 in) - 100 cm (39.4 in) on 0.50 mm (20 mils) codes	0.38 (15)	800

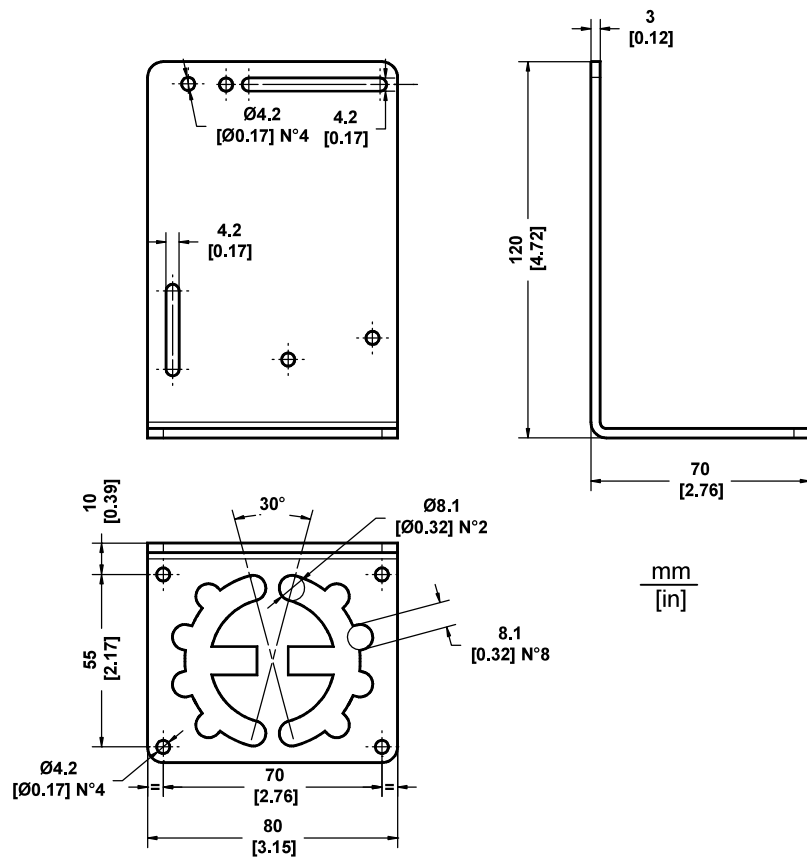
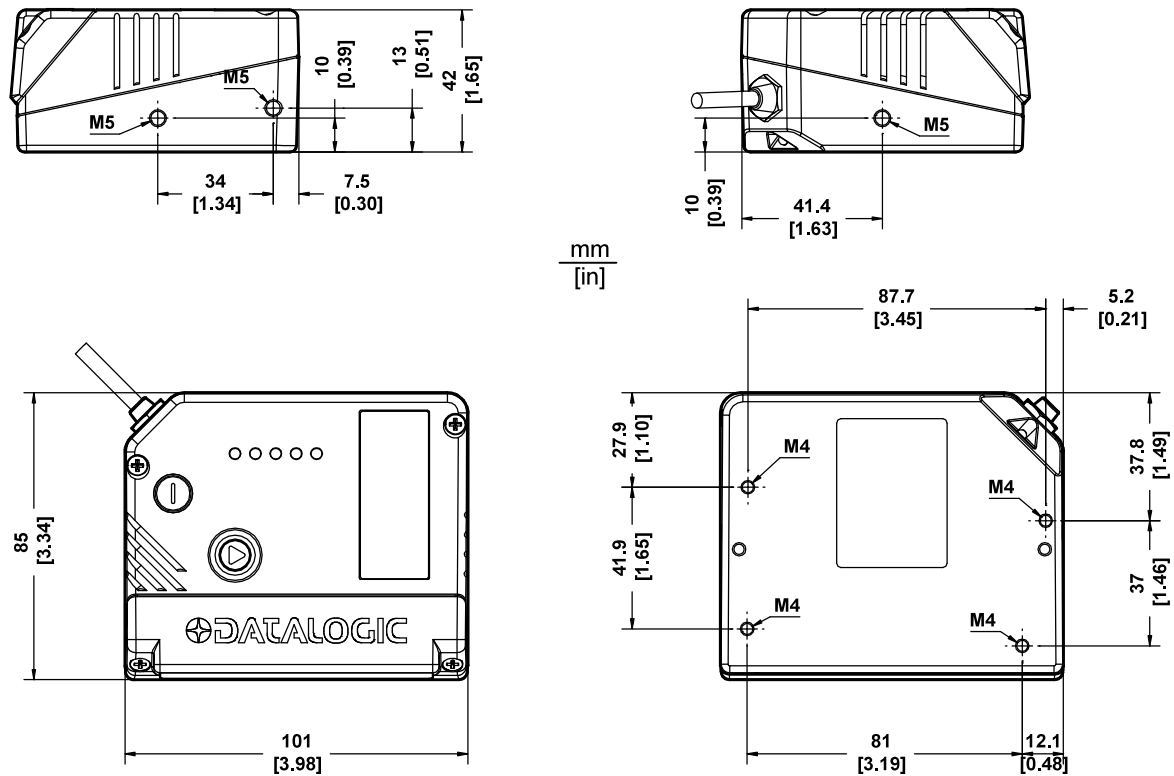
## TECHNICAL FEATURES

ELECTRICAL FEATURES	
Power Supply	10 to 30 Vdc
Max. Consumption	0.6 to 0.2 A; 6 W
Main Serial Interfaces	Programmable: RS232, RS485 FD and HD
Baud Rate	1200 to 115200
Auxiliary Interface	RS232
Baud Rate	1200 to 115200
ID-NET™ Interface	RS485 Half Duplex
Baud Rate	Up to 1Mbaud
Inputs	
Input 1 (External Trigger), Input 2	Optocoupled, polarity insensitive
Voltage	10 to 30 Vdc
Current Consumption	12 mA max.
Minimum Pulse Duration	5 ms
Outputs	
Output 1, Output 2	Optocoupled
V <sub>CE</sub>	30 Vdc max.
Collector Current	40 mA continuous max.; 130 mA pulsed max.
V <sub>CE</sub> Saturation	1V at 10 mA max.
Power Dissipation	80 mW max. at 45 °C (ambient temperature)
OPTICAL FEATURES	
Light Source	Semiconductor laser diode
Wavelength	In the range 630 to 680 nm
Safety Class	Class 2 – EN 60825-1; CDRH
READING FEATURES	
Scan Rate (software programmable)	600 to 900 scans/sec
Aperture Angle	50°
Maximum Reading Distance	See reading diagrams
Maximum Resolution	
ENVIRONMENTAL FEATURES	
Operating Temperature	0° to +50 °C (+32° to +122 °F) ①
Storage Temperature	-20° to +70 °C (-4° to +158 °F)
Humidity max.	90% non condensing
Vibration Resistance EN 60068-2-6	14 mm @ 2 to 10 Hz; 1.5 mm @ 13 to 55 Hz; 2 g @ 70 to 200 Hz; 2 hours on each axis
Shock Resistance EN 60068-2-27	30 g; 11 ms; 3 shocks on each axis
Protection Class	IP65
PHYSICAL FEATURES	
Dimensions	85 x 101 x 42 mm (3.3 x 4 x 1.7 in)
Weight	570 g (20.1 oz)
USER INTERFACE	
LED Indicators	Ready, Good, Trigger, Com, Status, Power On
Multi-function Key	X-PRESS™ button
Display	2 lines x 16 characters menu and diagnostic messages configurable in various languages

① If the reader is used in high temperature environments (over 40 °C), use of the Beam Shutter is advised (see the Genius™ configuration program) and/or a thermally conductive support (such as the metal bracket provided).



## MECHANICAL INSTALLATION



## PATENTS

This product is covered by one or more of the following patents:

U.S. patents 5,992,740; 6,394,352 B1; 6,742,710 B2; 6,688,524 B1

European patents 789,315 B1; 959,426 B9

Additional patents pending.

## COMPLIANCE

### LASER SAFETY

The scanner is classified as a Class 2 laser product according to EN 60825-1 regulations and as a Class II laser product according to CDRH regulations.

Disconnect the power supply when opening the device during maintenance or installation to avoid exposure to hazardous laser light.

There is a safety device, which allows the laser to be switched on only if the motor is rotating above the threshold for its correct scanning speed.

The laser beam can be switched off through a software command (see also the Genius Help On Line).

The laser diode used in this device is classified as a class 3B laser product according to EN 60825-1 regulations and as a Class IIIb laser product according to CDRH regulations.

Any violation of the optic parts in particular can cause radiation up to the maximum level of the laser diode (40 mW at 630 to 680 nm).

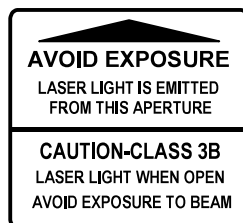


Figure 13 - Warning and Device Class Labels

### POWER SUPPLY

**This product is intended to be installed by Qualified Personnel only.**

This accessory device is intended to be supplied by a UL Listed or CSA Certified Power Unit with «Class 2» or LPS power source, which supplies power directly to the scanner via the 25-pin connector.

### CE COMPLIANCE

**Warning:** This is a Class A product. In a domestic environment this product may cause radio interference in which case the user may be required to take adequate measures.