



# **Voyager™ XP Curve 1400g**

---

**Corded Area-Imaging Scanner**

## **Quick Start Guide**

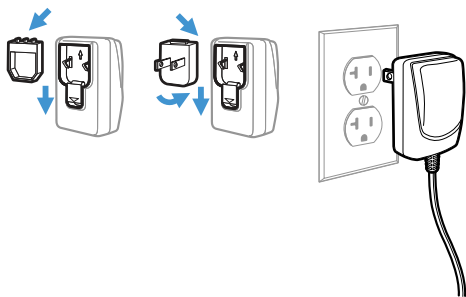
## Agency Model: 1400

**Note:** Refer to your User Guide for information about cleaning your device.

## Getting Started

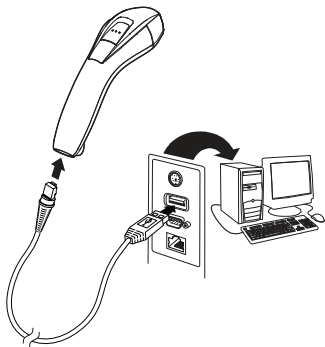
Turn off computer's power before connecting the scanner, then power up the computer once the scanner is fully connected.

## Power Supply Assembly (if included)

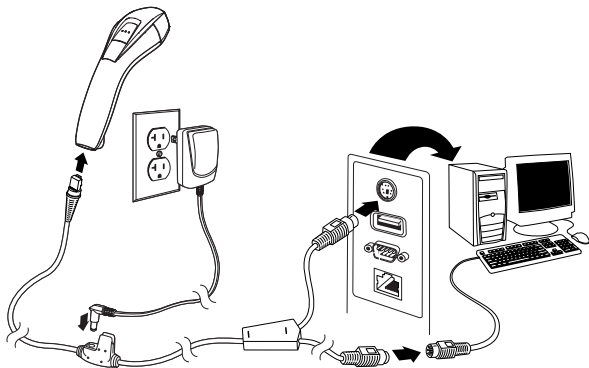


# Connecting the Scanner

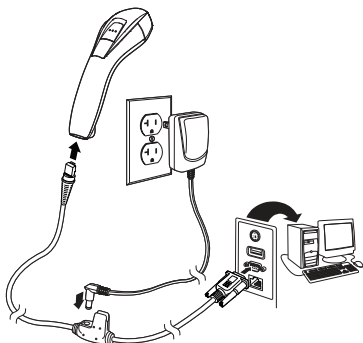
## USB



## Keyboard Wedge:



## RS232 Serial Port:



## Reading Techniques

The view finder projects an aiming dot that should be centered over the barcode, but it can be positioned in any direction for a good read.



Hold the scanner over the barcode, press the button, and center the aiming dot on the barcode.



The aiming dot is smaller when the scanner is closer to the code and larger when it is farther from the code. Hold the scanner close to smaller barcodes, and farther away from large barcodes to get a proper read.

If the barcode is highly reflective (e.g., laminated), you may need to tilt the scanner at an angle so the barcode can be scanned.

## Standard Product Defaults

The following barcode resets all standard product default settings.



Standard Product Defaults

## Keyboard Country

Scan the appropriate country code that follows to program the keyboard layout for your country or language. By default, national character replacements are used for the following characters: # \$ @ [ ] \ | ^ ' { } ~

Refer to the ISO 646 Character Replacements chart in your User Guide to view the character replacements for each country.



USA (Default)



Belgium



Denmark



Finland



France



Germany/Austria



Great Britain



Italy



Norway



Spain



Switzerland

**Note:** *For a complete list of country codes, see the User Guide for your product.*

## Trigger

The following barcodes will allow you to use the scanner in **Manual Trigger - Normal Mode** (need to press the button to read) or **Presentation mode** (the scanner is activated when it “sees” a barcode).



Manual Trigger - Normal  
(Default)



Presentation Mode

## Suffix

If you want a carriage return after the barcode, scan the **Add CR Suffix** barcode. To add a tab after the barcode, scan the **Add Tab Suffix** barcode. Otherwise, scan the **Remove Suffix** barcode to remove the suffixes.



Add CR Suffix



Add Tab Suffix



Remove Suffix

## Add Code ID Prefix to all Symbolologies

Scan the following barcode if you wish to add a Code ID prefix to all symbolologies at once.



Add Code ID Prefix To All Symbolologies  
(Temporary)

**Note:** *For a complete list of Code IDs, see the User Guide for your product.*



## Function Code Transmit

When this selection is enabled and function codes are contained within the scanned data, the scanner transmits the function code to the terminal. Charts of these function codes are provided in your User Guide. When the scanner is in keyboard wedge mode, the scan code is converted to a key code before it is transmitted.



Enable  
(Default)



Disable

# Data Format Editor Instructions

The following are abbreviated instructions for entering a data format. For complete instructions refer to your User Guide.

- Step 1. Scan the **Enter Data Format** symbol.
- Step 2. Primary/Alternate Format: scan **0** for Primary Format
- Step 3. Terminal Type: scan **099** for any terminal type
- Step 4. Code I.D.: scan **99** for any barcode type
- Step 5. Length: scan **9999** for any length barcode.
- Step 6. Editor commands: use the Programming Chart that follows.
- Step 7. Scan **Save** to save your entries.



Enter Data Format



Clear All Data Formats



Save

# Programming Chart



0



1



2



3



4



5



6



7



8



9



A



B



C



D



E



F



Save

## EZConfig for Scanning

To access additional features for the scanner, use *EZConfig for Scanning*, an online configuration software tool, available from our [website](#).

## Support

To search our knowledge base for a solution or to log into the Technical Support portal and report a problem, go to [honeywell.com/PSTechnicalsupport](https://honeywell.com/PSTechnicalsupport).

## User Documentation

For the user guide and other documentation, go to [automation.honeywell.com](https://automation.honeywell.com).

## Limited Warranty

For warranty information, go to [automation.honeywell.com](https://automation.honeywell.com) and click **Support > Productivity Solutions> Warranties**.

## Patents

For patent information, see [www.hsmpats.com](https://www.hsmpats.com).

## Disclaimer

Honeywell International Inc. (“HII”) reserves the right to make changes in specifications and other information contained in this document without prior notice, and the reader should in all cases consult HII to determine whether any such changes have been made. HII makes no representation or warranties regarding the information provided in this publication.

HII shall not be liable for technical or editorial errors or omissions contained herein; nor for incidental or consequential damages resulting from the furnishing, performance, or use of this material. HII disclaims all responsibility for the selection and use of software and/or hardware to achieve intended results.

This document contains proprietary information that is protected by copyright. All rights are reserved. No part of this document may be photocopied, reproduced, or translated into another language without the prior written consent of HII.

Copyright © 2025 Honeywell Group of Companies. All rights reserved.