



BSR idware GmbH

Jakob-Haringer-Str.3

A-5020 Salzburg

<https://www.bsr.at>

sales@bsr.at

Honeywell

Granit™ Ultra 2100i

Industrial Area-Imaging Scanner

Quick Start Guide

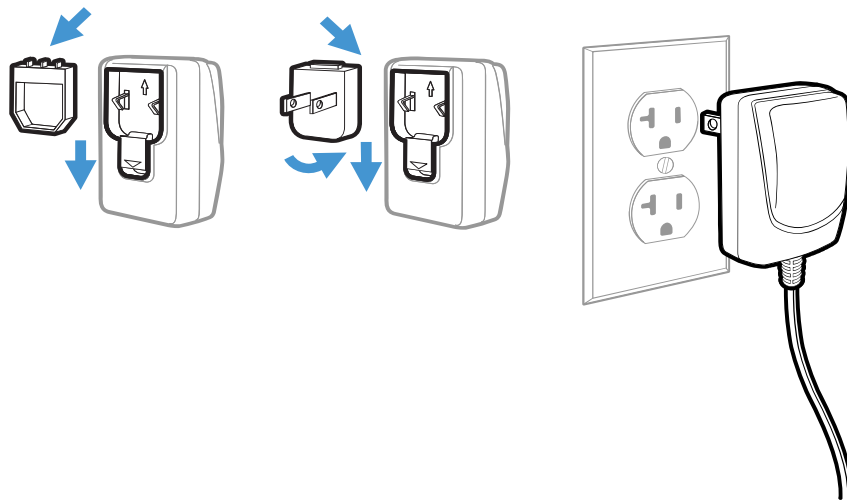
Agency Model: 2100i

Refer to your User Guide for information about cleaning your device.

Get Started

Turn off computer's power before connecting the scanner, then power up the computer once the scanner is fully connected.

Power Supply Assembly (if included)

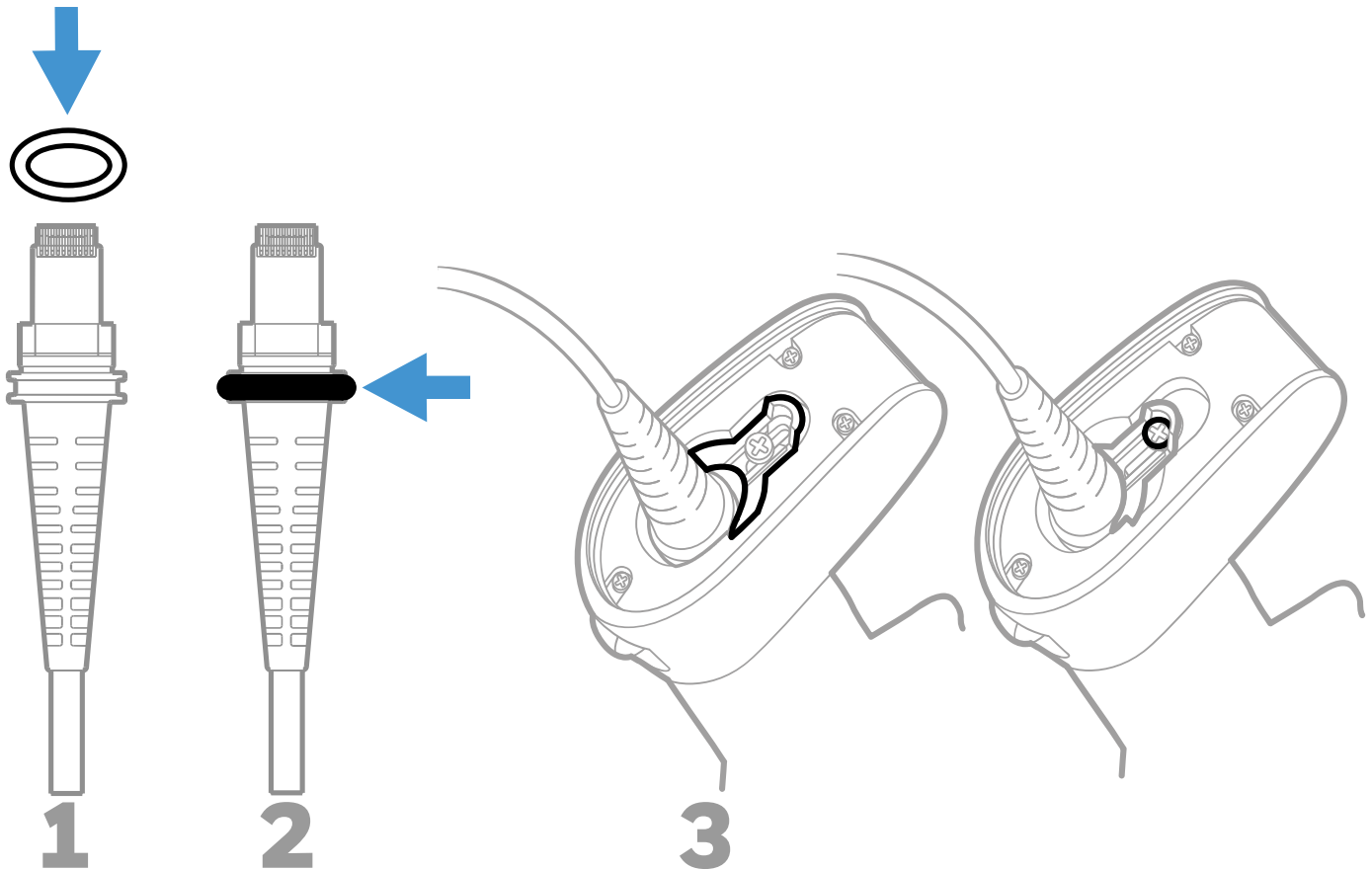


Note: The power supply must be ordered separately, if needed.

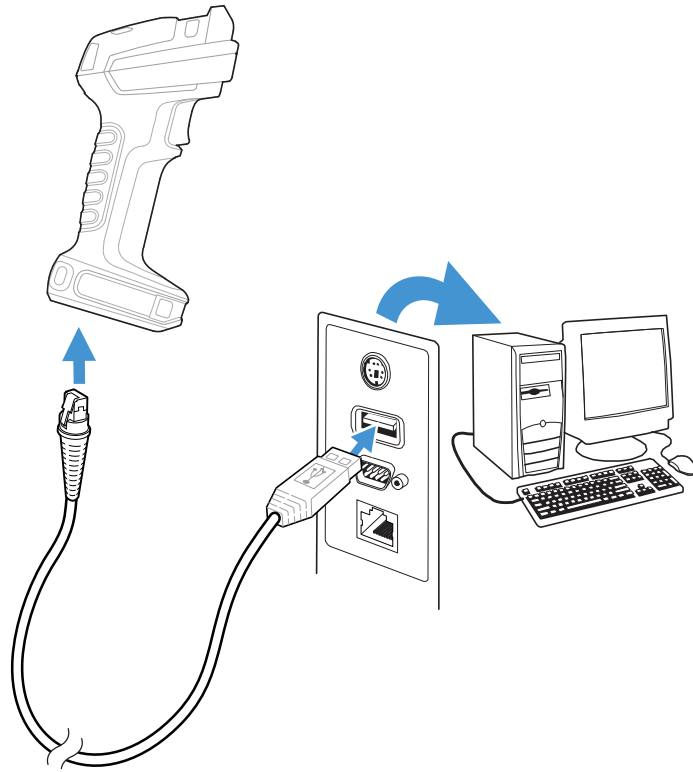
Connect the Scanner

When connecting the scanner, make sure the cable is pushed tightly into the scanner. Loosen the locking plate and slide it over the base of the cable connector to lock the cable in place. Tighten the screw.

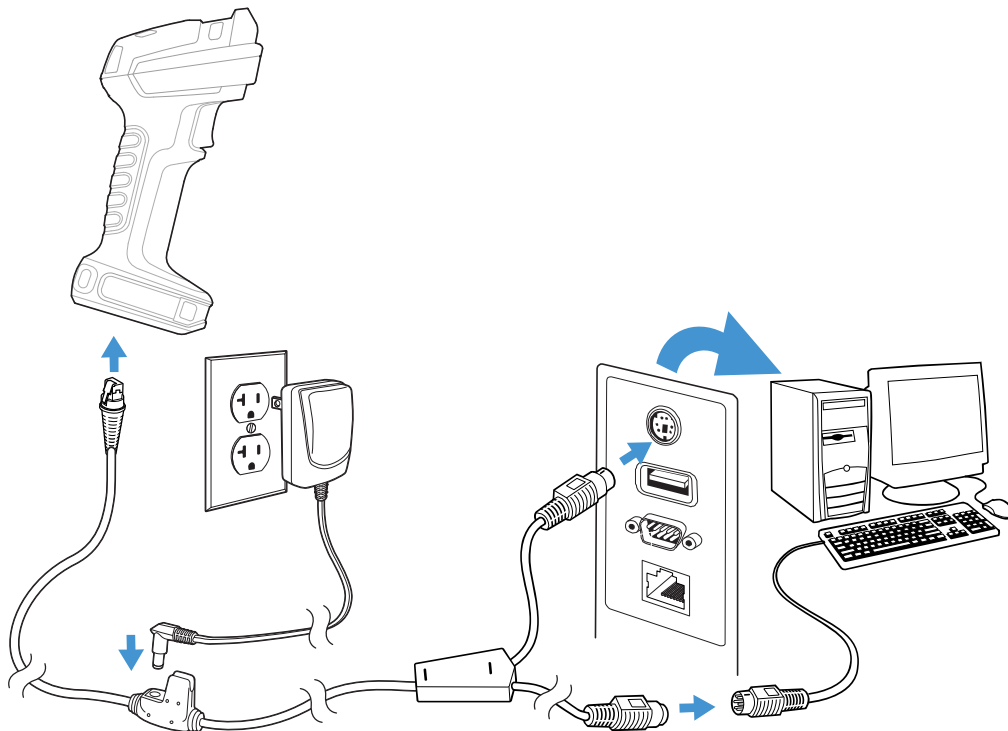
⚠ IP65/68



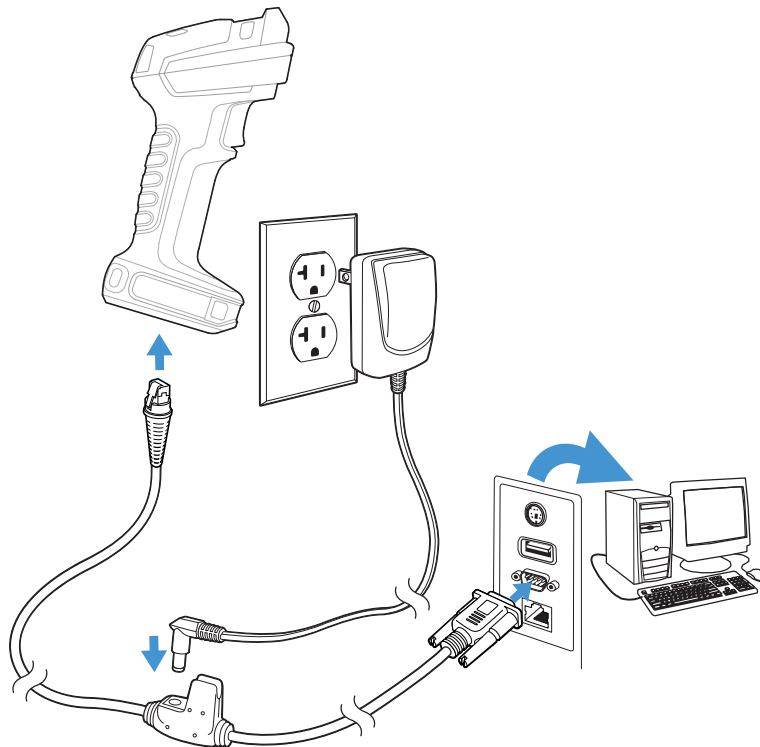
USB:



Keyboard Wedge:



RS232 Serial Port:



Reading Techniques

The view finder projects an aiming beam that should be centered over the barcode, but it can be positioned in any direction for a good read.



BSR idware GmbH
Jakob-Haringer-Str.3
A-5020 Salzburg
<https://www.bsr.at>
sales@bsr.at

Standard Product Defaults

The following barcode resets all standard product default settings.



Standard Product Defaults

USB Serial

Scan the following code to program the scanner to emulate a regular RS232-based COM Port. If you are using a Microsoft® Windows® PC, you will need to download a driver from the Honeywell website (automation.honeywell.com). The driver will use the next available COM Port number. Apple® Macintosh computers recognize the scanner as a USB CDC class device and automatically use a class driver.



USB Serial

Note: No extra configuration (e.g., baud rate) is necessary.

USB PC Keyboard

Scan the following code to program the scanner for a USB PC Keyboard.



USB PC Keyboard

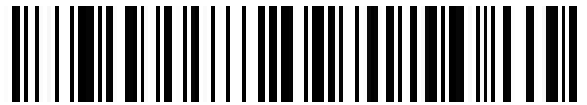
Keyboard Country

Scan the appropriate country code below to program the key-

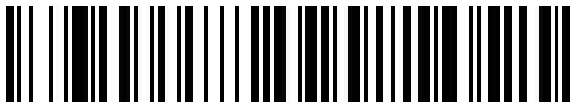
board layout for your country or language. By default, national character replacements are used for the following characters: # \$ @ [\] ^ ' { | } ~ Refer to the ISO 646 Character Replacements chart in your User Guide to view the character replacements for each country.



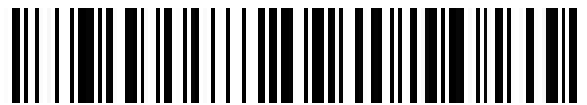
USA (Default)



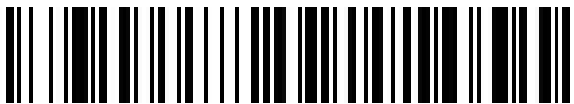
Belgium



Denmark



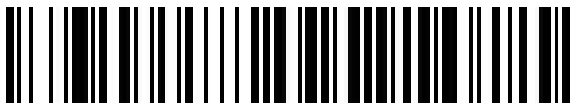
Finland



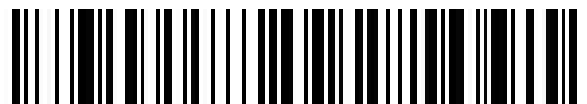
France



Germany/Austria



Great Britain



Italy



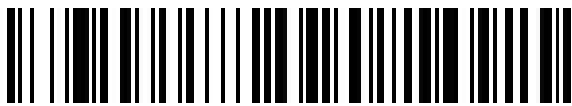
BSR idware GmbH

Jakob-Haringer-Str.3

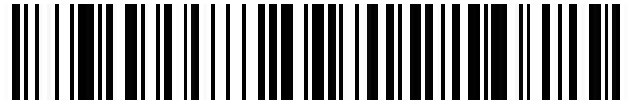
A-5020 Salzburg

<https://www.bsr.at>

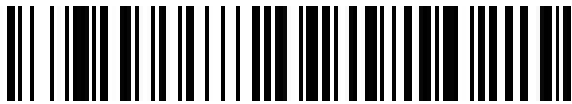
sales@bsr.at



Norway



Spain



Switzerland

Note: *For a complete list of country codes, see the User Guide for your product.*

Suffix

If you want a carriage return after the barcode, scan the **Add CR Suffix** barcode. To add a tab after the barcode, scan the **Add Tab Suffix** barcode. Otherwise, scan the **Remove Suffix** barcode to remove the suffixes.



Add CR Suffix



Add Tab Suffix



Remove Suffix

Add Code ID Prefix to all Symbologies

Scan the following barcode if you wish to add a Code ID prefix to all symbologies at once.



Add Code ID Prefix To All Symbologies
(Temporary)

Note: *For a complete list of Code IDs, see the User Guide for your product.*

Support

To search our knowledge base for a solution or to log into the Technical Support portal and report a problem, go to honeywell.com/PSTechnicalsupport.

User Documentation

For the user guide and other documentation, go to automation.honeywell.com.

Limited Warranty

For warranty information, go to automation.honeywell.com and click **Support > Productivity Solutions > Warranties**.

Patents

For patent information, see www.hsmpats.com.

Disclaimer

Honeywell International Inc. (“HII”) reserves the right to make changes in specifications and other information contained in this document without prior notice, and the reader should in all cases consult HII to determine whether any such changes have been made. HII makes no representation or warranties regarding the information provided in this publication.

HII shall not be liable for technical or editorial errors or omissions contained herein; nor for incidental or consequential damages resulting from the furnishing, performance, or use of this material. HII disclaims all responsibility for the selection and use of software and/or hardware to achieve intended results.

This document contains proprietary information that is protected by copyright. All rights are reserved. No part of this document may be photocopied, reproduced, or translated into another language without the prior written consent of HII.

Copyright © 2025 Honeywell Group of Companies. All rights reserved.



BSR idware GmbH

Jakob-Haringer-Str.3

A-5020 Salzburg

<https://www.bsr.at>

sales@bsr.at