



**ZEBRA**

**WT6000 / WT6300**

**RS4000 / RS5000 / RS6000**

**RS5100**

**Accessories Guide**

# **WT6000, WT6100, RS6000 CHARGING OPTIONS**

# Charging Options

## Single Cradles



### WT6x Single Slot Cradle w/Spare Battery Charger:

**CRD-NGWT-1S1BU-01:** Single slot USB Cradle, w/spare battery charging, charges one wearable terminal and one spare battery.

Allows USB communication to the device with an additional micro-USB cable.

**Requires:** Power Supply **PWR-BGA12V50W0WW**, DC Line Cord **CBL-DC-388A1-01** and Country Specific 3 wire AC Line Cord.

## Additional accessories for single slot cradle



### 25-124330-01R

Micro-USB to USB Cable for single slot cradle



### PWR-BGA12V50W0WW

Level VI AC/DC Power Supply (Brick, replacement for PWRS-14000-148R)

**AC Input:** 100-240V, 2.4A

**DC Output:** 12V, 4.16A, 50W

**Requires:** DC line cord and Country specific grounded AC line cord.



### CBL-DC-388A1-01

DC Line Cord for running the single slot cradles or battery chargers from a single Level VI power supply PWR-BGA12V50W0WW, Level VI replacement for PWRS-14000-148R.



### 23844-00-00R

US AC line cord, 7.5 feet long, grounded, three wire for power supplies.

## Charging LED indicators

Off	Battery not charging
Solid Amber	Healthy battery charging
Solid Green	Healthy battery charging complete
Fast Blink Red	Charging error
Solid Red	Unhealthy battery

# Charging Options

## Single Cradles



### RS6000 Single Slot Cradle w/Spare Battery Charger:

**CRD-NGRS-1S1BU-01:** Single slot USB Cradle, w/spare battery charging, charges one ring scanner and one spare battery.

Allows USB communication to the device with an additional micro-USB cable.

**Requires:** Power Supply **PWR-BGA12V50W0WW**, DC Line Cord **CBL-DC-388A1-01** and Country Specific 3 wire AC Line Cord.

## Additional accessories for single slot cradle



### 25-124330-01R

Micro-USB to USB Cable for single slot cradle



### PWR-BGA12V50W0WW

Level VI AC/DC Power Supply (Brick, replacement for PWRS-14000-148R)

**AC Input:** 100-240V, 2.4A

**DC Output:** 12V, 4.16A, 50W

**Requires:** DC line cord and Country specific grounded AC line cord.



### CBL-DC-388A1-01

DC Line Cord for running the single slot cradles or battery chargers from a single Level VI power supply PWR-BGA12V50W0WW, Level VI replacement for PWRS-14000-148R.



### 23844-00-00R

US AC line cord, 7.5 feet long, grounded, three wire for power supplies.

## Charging LED indicators

Off	Battery not charging
Solid Amber	Healthy battery charging
Solid Green	Healthy battery charging complete
Fast Blink Red	Charging error
Solid Red	Unhealthy battery

# Charging Options

## Two-Slot Cradle



### WT6x/RS6000 Two Slot Cradle:

**CRD-NWTRS-2SUCH-01:** 2slot USB Cradle, charges one wearable terminal and one ring scanner.

Allows USB communication to each device with an additional micro-USB cable.

**Requires:** Power Supply **PWR-BGA12V50W0WW**, DC Line Cord **CBL-DC-388A1-01** and Country Specific 3 wire AC Line Cord.

## Additional accessories for single slot cradle



### 25-124330-01R

Micro-USB to USB Cable for single slot cradle



### PWR-BGA12V50W0WW

Level VI AC/DC Power Supply (Brick, replacement for PWRS-14000-148R)

**AC Input:** 100-240V, 2.4A

**DC Output:** 12V, 4.16A, 50W

**Requires:** DC line cord and Country specific grounded AC line cord.



### CBL-DC-388A1-01

DC Line Cord for running the single slot cradles or battery chargers from a single Level VI power supply PWR-BGA12V50W0WW, Level VI replacement for PWRS-14000-148R.



### 23844-00-00R

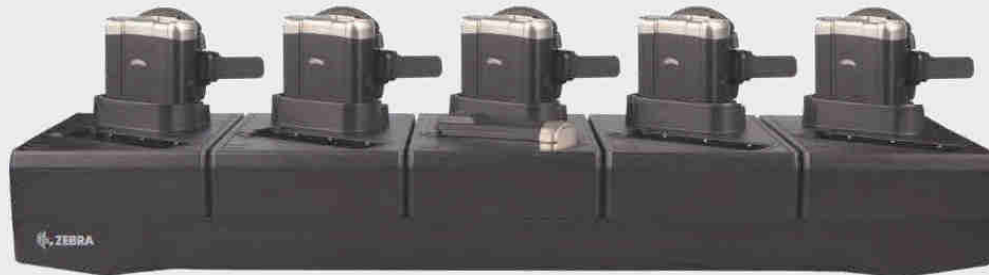
US AC line cord, 7.5 feet long, grounded, three wire for power supplies.

## Charging LED indicators

Off	Battery not charging
Solid Amber	Healthy battery charging
Solid Green	Healthy battery charging complete
Fast Blink Red	Charging error
Solid Red	Unhealthy battery

# Charging Options

## Five-Slot Cradles



### Five-Slot Cradle options:

**CRD-NGWT-5S5BC-02:** WT6x 5Slot Charge Only Cradle w/Spare Battery Charger, charges up to 5 wearable terminals and 5 spare batteries.

**CRD-NGRS-5S5BC-02:** RS6000 5Slot Charge Only Cradle w/Spare Battery Charger, charges up to 5 ring scanners and 5 spare batteries.

**CRD-NGWT-5S5BE-02:** WT6x 5Slot Ethernet Cradle w/Spare Battery Charger, charges up to 5 ring scanners and 5 spare batteries.

**CRD-NGRS-5S5BE-02:** RS6000 5Slot Ethernet Cradle w/Spare Battery Charger, charges up to 5 ring scanners and 5 spare batteries.

**All Cradles Require:** Power Supply **PWR-BGA12V108W0WW**, DC Cord **CBL-DC-381A1-01** and Country Specific 3 wire AC Line Cord.

## Additional accessories



### PWR-BGA12V108W0WW

Level VI AC/DC Power Supply (Brick, Replacement for PWRS-14000-241R)

**AC Input:** 100-240V, 2.8A

**DC Output:** 12V, 9A, 108W

**Requires:** DC line cord and Country specific grounded AC line cord.



### CBL-DC-381A1-01

DC Line Cord for running multi-slot cradles from a single Level VI power supply PWR-BGA12V108W0WW, Level VI replacement for PWRS-14000-241R



### 23844-00-00R

US AC line cord, 7.5 feet long, grounded, three wire for power supplies.



### BRKT-SCRD-SMRK-01

Rack/Wall Mounting bracket for multi-slot cradles.

## Charging LED indicators

Off	Battery not charging
Solid Amber	Healthy battery charging
Solid Green	Healthy battery charging complete
Fast Blink Red	Charging error
Solid Red	Unhealthy battery



# Charging Options

## Ten-Slot Cradles



### Ten-Slot Cradle options:

**CRD-NWTRS-10SCH-02:** WT6x/RS6000 10Slot Charge Only Cradle, charges up to 5 wearable terminals and 5 ring scanners.

**CRD-NGWT-10SCH-02:** WT6x 10Slot Charge Only Cradle, charges up to 10 wearable terminals.

**CRD-NGRS-10SCH-02:** RS6000 10Slot Charge Only Cradle, charges up to 10 ring scanners

**All Cradles Require:** Power Supply **PWR-BGA12V108W0WW**, DC Cord **CBL-DC-381A1-01** and Country Specific 3 wire AC Line Cord.

## Additional accessories



### PWR-BGA12V108W0WW

Level VI AC/DC Power Supply (Brick, Replacement for PWRS-14000-241R)

**AC Input:** 100-240V, 2.8A

**DC Output:** 12V, 9A, 108W

**Requires:** DC line cord and Country specific grounded AC line cord.



### CBL-DC-381A1-01

DC Line Cord for running multi-slot cradles from a single Level VI power supply PWR-BGA12V108W0WW, Level VI replacement for PWRS-14000-241R



### 23844-00-00R

US AC line cord, 7.5 feet long, grounded, three wire for power supplies.



### BRKT-SCRD-SMRK-01

Rack/Wall Mounting bracket for multi-slot cradles.

## Charging LED indicators

Off	Battery not charging
Solid Amber	Healthy battery charging
Solid Green	Healthy battery charging complete
Fast Blink Red	Charging error
Solid Red	Unhealthy battery

# Charging Options

## Battery Charging



### Spare Battery Charging Options:

**SAC-NWTRS-4SCH-01:** 4-slot battery charger, charges four spare batteries.

**Requires:** Power Supply **PWR-BGA12V50W0WW**, DC Line Cord **CBL-DC-388A1-01** and Country Specific 3 wire AC Line Cord.

#### **SAC-NWTRS-20SCH-01:**

20-slot battery charger, charges 20 spare batteries.

**Requires:** Power Supply **PWR-BGA12V108W0WW**, DC Cord **CBL-DC-381A1-01** and Country Specific 3 wire AC Line Cord.

### Additional accessories



#### **PWR-BGA12V50W0WW**

Level VI AC/DC Power Supply

**AC Input:** 100-240V, 2.4A

**DC Output:** 12V, 4.16A, 50W

**Requires:** DC line cord and Country specific grounded AC line cord.



#### **CBL-DC-388A1-01**

DC Line Cord for running the single slot cradles or battery chargers from a single Level VI power supply PWR-BGA12V50W0WW.



#### **PWR-BGA12V108W0WW**

Level VI AC/DC Power Supply

**AC Input:** 100-240V, 2.8A

**DC Output:** 12V, 9A, 108W

**Requires:** DC line cord and Country specific grounded AC line cord.



#### **CBL-DC-381A1-01**

DC Line Cord for running multi-slot cradles from a single Level VI power supply PWR-BGA12V108W0WW.



#### **23844-00-00R**

US AC line cord, 7.5 feet long, grounded, three wire for power supplies.



#### **BRKT-SCRD-SMRK-01**

Rack/Wall Mounting bracket for multi-slot cradles and 20slot battery charger.



# RS5100

# CHARGING OPTIONS

# Charging Options

## Single Cradles



### RS5100 Four Slot Ring Scanner Cradle

**CRD-RS51-4SCHG-01:** Four slot charge-only cradle, charges four RS5100 ring scanners. LEDs on the RS5100 indicate charge status of each ring scanner.

**Requires:** Power Supply **PWR-BGA12V50W0WW**, DC Line Cord **CBL-DC-388A1-01** and Country Specific 3 wire AC Line Cord.

## Additional accessories for single slot cradle



### PWR-BGA12V50W0WW

Level VI AC/DC Power Supply (Brick, replacement for PWRS-14000-148R)

**AC Input:** 100-240V, 2.4A

**DC Output:** 12V, 4.16A, 50W

**Requires:** DC line cord and Country specific grounded AC line cord.



### CBL-DC-388A1-01

DC Line Cord for running the single slot cradles or battery chargers from a single Level VI power supply PWR-BGA12V50W0WW, Level VI replacement for PWRS-14000-148R.



### 23844-00-00R

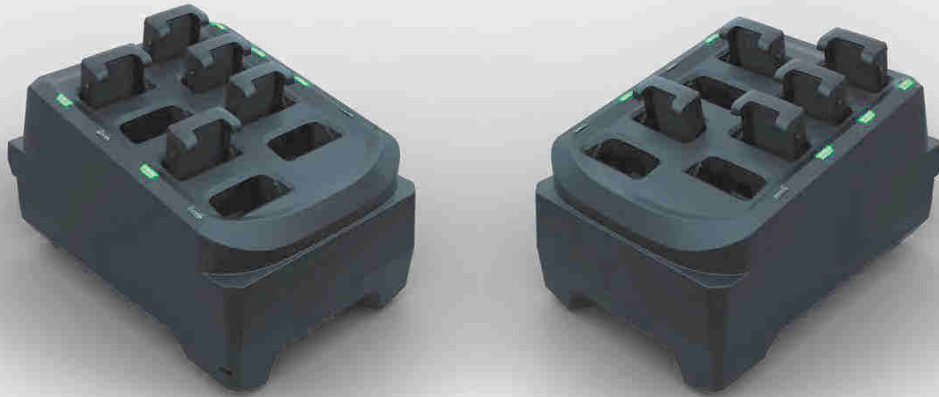
US AC line cord, 7.5 feet long, grounded, three wire for power supplies.

## Charging LED indicators

Off	Battery not charging
Solid Amber	Healthy battery charging
Solid Green	Healthy battery charging complete
Fast Blink Red	Charging error
Solid Red	Unhealthy battery

# Charging Options

## Single Cradles



### RS5100 Eight Slot Battery Charger

**SAC-RS51-8SCHG-01:** Eight slot spare battery charger, charges eight RS5100 batteries. LEDs on the cradle indicate charge status of each battery.

**Requires:** Power Supply **PWR-BGA12V50W0WW**, DC Line Cord **CBL-DC-388A1-01** and Country Specific 3 wire AC Line Cord.

## Additional accessories for single slot cradle



### PWR-BGA12V50W0WW

Level VI AC/DC Power Supply (Brick, replacement for PWRS-14000-148R)

**AC Input:** 100-240V, 2.4A

**DC Output:** 12V, 4.16A, 50W

**Requires:** DC line cord and Country specific grounded AC line cord.



### CBL-DC-388A1-01

DC Line Cord for running the single slot cradles or battery chargers from a single Level VI power supply PWR-BGA12V50W0WW, Level VI replacement for PWRS-14000-148R.



### 23844-00-00R

US AC line cord, 7.5 feet long, grounded, three wire for power supplies.

## Charging LED indicators

Off	Battery not charging
Solid Amber	Healthy battery charging
Solid Green	Healthy battery charging complete
Fast Blink Red	Charging error
Solid Red	Unhealthy battery

# Charging Options

## Multi-Slot Cradle



## RS5100 20-Slot Ring Scanner Cradle

**CRD-RS51-20SCHG-01:** 20 slot cradle, charges twenty RS5100 ring scanners. LEDs on the RS5100 indicate charge status of each ring scanner.

**Requires:** Power Supply **PWR-BGA12V108W0WW**, DC Line Cord **CBL-DC-381A1-01** and Country Specific 3 wire AC Line Cord.

## Additional accessories



### PWR-BGA12V108W0WW

Level VI AC/DC Power Supply (Brick, Replacement for PWRS-14000-241R)

**AC Input:** 100-240V, 2.8A

**DC Output:** 12V, 9A, 108W

**Requires:** DC line cord and Country specific grounded AC line cord.



### CBL-DC-381A1-01

DC Line Cord for running multi-slot cradles from a single Level VI power supply PWR-BGA12V108W0WW, Level VI replacement for PWRS-14000-241R



### 23844-00-00R

US AC line cord, 7.5 feet long, grounded, three wire for power supplies.



### BRKT-SCRD-SMRK-01

Rack/Wall Mounting bracket for multi-slot cradles.

## Charging LED indicators

Off	Battery not charging
Solid Amber	Healthy battery charging
Solid Green	Healthy battery charging complete
Fast Blink Red	Charging error
Solid Red	Unhealthy battery

# Charging Options

## Multi-Slot Cradle



### RS5100 40-Slot Battery Charger

**SAC-RS51-40SCHG-01:** 40 slot spare battery charger, charges forty RS5100 batteries. LEDs on the cradle indicate charge status of each battery.

**Requires:** Power Supply **PWR-BGA12V108W0WW**, DC Line Cord **CBL-DC-381A1-01** and Country Specific 3 wire AC Line Cord.

## Additional accessories



### PWR-BGA12V108W0WW

Level VI AC/DC Power Supply (Brick, Replacement for PWRS-14000-241R)

**AC Input:** 100-240V, 2.8A

**DC Output:** 12V, 9A, 108W

**Requires:** DC line cord and Country specific grounded AC line cord.



### CBL-DC-381A1-01

DC Line Cord for running multi-slot cradles from a single Level VI power supply PWR-BGA12V108W0WW, Level VI replacement for PWRS-14000-241R



### 23844-00-00R

US AC line cord, 7.5 feet long, grounded, three wire for power supplies.



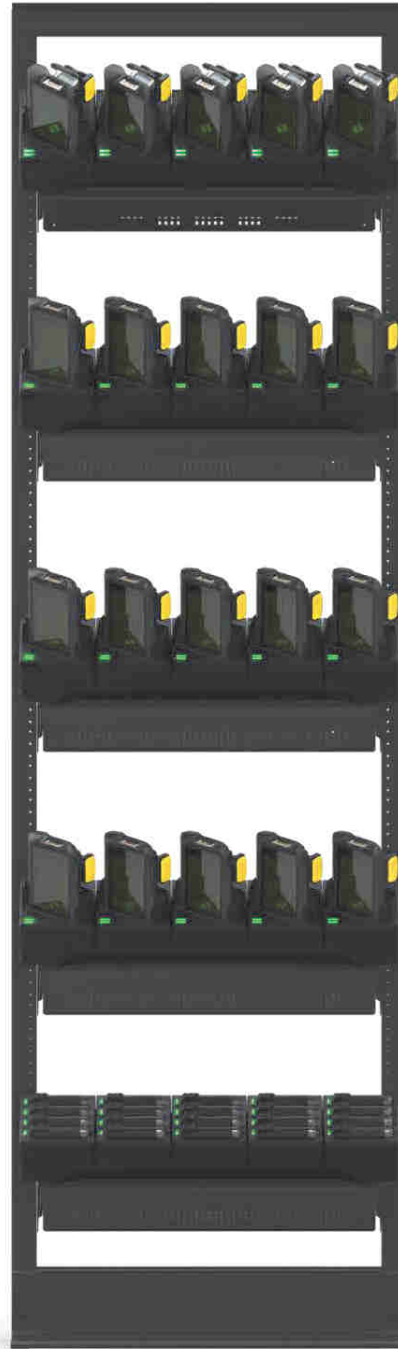
### BRKT-SCRD-SMRK-01

Rack/Wall Mounting bracket for multi-slot cradles.

## Charging LED indicators

Off	Battery not charging
Solid Amber	Healthy battery charging
Solid Green	Healthy battery charging complete
Fast Blink Red	Charging error
Solid Red	Unhealthy battery

# Multi-Slot Cradle Installations





# BATTERIES

# WT6000 / WT6300 / RS6000 Batteries

## Batteries for WT6000, WT6300 and RS6000



### **BTRY-NWTRS-33MA-02**

PowerPrecision+ Lithium Ion battery, 3350 mAh. Advanced battery technology, provides higher level of intelligence (State of Charge and State of Health) for wearable terminal or ring scanner.



### **BTRY-NGWT-50MA-01**

PowerPrecision+ Lithium Ion battery, 5000 mAh for WT6x wearable terminal. For extended run time at ambient temperature and in freezer environments.

*Not for use in RS6000.*

# RS5100 Batteries

## Batteries for RS5100 Ring Scanner



### **BTRY-RS51-4MA-01**

Lithium Ion battery, standard capacity 480 mAh. PowerPrecision+ advanced battery technology, provides higher level of intelligence on battery state of charge and state of health.

### **BTRY-RS51-4MA-10**

10-pack Standard Battery



### **BTRY-RS51-7MA-01**

Lithium Ion battery, extended capacity 735 mAh. PowerPrecision+ advanced battery technology. Provides longer run time than standard battery and cold operation to -20°C.

### **BTRY-RS51-7MA-10**

10-pack Extended Battery

### **BTRY-RS51-7MA-02**

India/South Korea  
Extended Battery



Play video

# **WT6000 / WT6300**

## **KEYPAD / CABLES / ADAPTERS**

# WT6x Keypad

## Accessory Keypad for WT6x Wearable Terminal

### KYPD-WT6XANFASM-01

WT6x Keypad Assembly, Alphanumeric and Function, Includes Mounting Cleat



### ACC-WT6XCLTMNT-01

Spare Mounting Cleat for WT6x Keypad Assembly



WT6x with  
Attached Keypad

# WT6x Cables/Adapters

## USB/Charge Cable

### CBL-NGWT-USBCHG-01

Provides USB communication and charge to the wearable terminal.

**Requires:** Power supply **PWR-BUA5V16W0WW**, DC Line Cord **CBL-DC-383A1-01** and un-grounded country specific AC line cord.



## Audio Cables

### CBL-NGWT-AUQDLG-01

Audio adapter cable, compatible with quick-disconnect wired headsets. Compatible while the device is worn on the hip.

**Requires:** QD headset.



### CBL-NGWT-AUQDST-01

Audio adapter cable, compatible with quick-disconnect wired headsets. Compatible while the device is worn on the wrist.

**Requires:** QD headset.



## Other Cables

### CBL-NGWT-HDVBAP-01

Vibrating cable, connects directly to the wearable terminal and provides additional haptic feedback to the user.



### PWR-BUA5V16W0WW

Level VI AC/DC Power Supply

**AC Input:** 100-240V, 0.6A

**DC Output:** 5.4V, 3A, 16W

**Requires:** DC line cord and Country specific un-grounded AC line cord.



### CBL-DC-383A1-01

DC Line Cord for running single slot cradles or charging cables from a single Level VI power supply PWR-BUA5V16W0WW.



### 50-16000-182R

US AC line cord, un-grounded, two-wire.



### RCH51

Rugged wired headset with quick-disconnect



### 25-129938-02R

Training cable - connects two wired headsets to one mobile computer





**BSR idware GmbH**

Jakob-Haringer-Str.3

A-5020 Salzburg

<https://www.bsr.at>

[sales@bsr.at](mailto:sales@bsr.at)

# WT6000 / WT6300

## SOFT GOODS

# Soft-Goods

## Wearable Terminal



### Wrist Mount options:

**SG-NGWT-WRMTS-02:** WT6x Wrist Mount, includes carrier, comfort pad and small/medium strap.

**SG-NGWT-WRMTL-01:** WT6x Wrist Mount, includes carrier, comfort pad and medium/large strap.

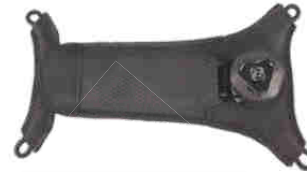
**SG-NGWT-WRMTXL-01:** WT6x Wrist Mount, includes carrier, comfort pad and extra large strap.

### Additional accessories



#### **SG-NGWT-WSTPST-01**

Spare replacement strap for wrist mount (small/medium)



#### **SG-NGWT-WSTPLN-01**

Spare replacement strap for wrist mount (medium/large)



#### **SG-NGWT-WSTPXL-01**

Spare replacement strap for wrist mount (extra large)



#### **SG-WT4027050-01R**

Optional arm sleeves for wrist mount (pack of 5)



#### **SG-NGWT-CMPD-01**

Replacement comfort pad for wrist mount.



#### **SG-NGWT-HPMNT-01**

Hip-mount for wearable terminal, allows to use the device on the hip.

# Soft-Goods: Wrist Mount



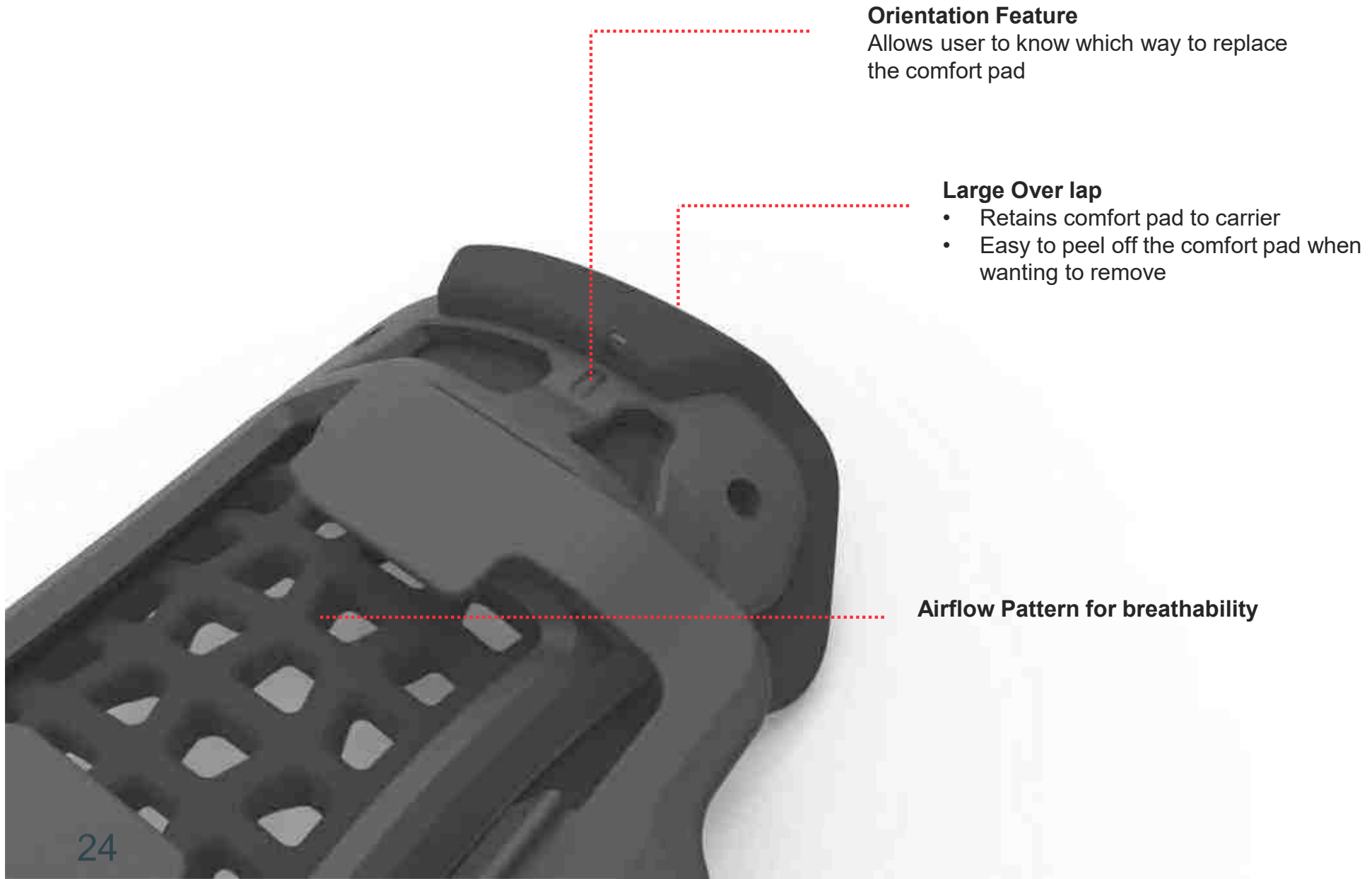
- **Velcro removed**
- **One Adjustable strap instead of two**
- **Integrated BOA closure system**
  - Strong
  - Durable
  - Easy to use
- **Specific Materials chosen for hygienic reasons**
  - Can be cleaned down on site
  - Non absorbent



BOA closure system

Specific Materials chosen for grip and wipe down qualities

# Soft-Goods: Comfort Pad



# Soft-Goods: Wrist Strap

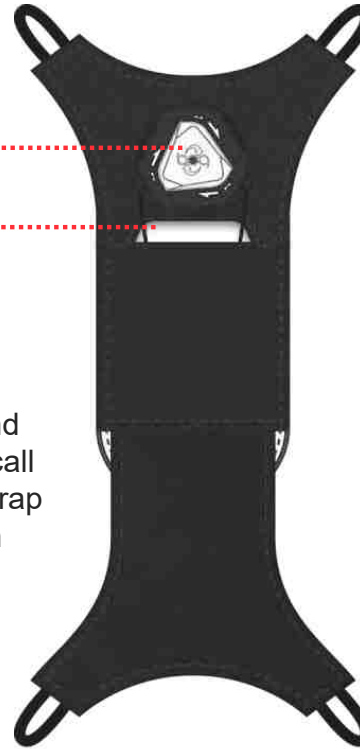


Improved ease of removal of strap from carrier

Retaining Rib holding elastic cord in place when not under load

Three size straps to cover the many various sizes of users

Small Strap



White Dial and accent colour call out for Small Strap Identification

Large Strap



Black Dial and accent colour call out for Large Strap Identification

Ex-Large Strap



Blue Dial and accent colour call out for Ex-Large Strap Identification

# RS5100 TRIGGER OPTIONS



# Trigger Options

## Single Trigger



### **SG-RS51-TRGSS-02:**

- Durable nylon strap with metal cam buckle
- Long trigger lifecycle (2+ million presses).
- Remove and rotate for left and right hand mounting

## **Additional accessories**

### **SG-RS51-CMPD-05**

RS5100 replacement comfort pads, to be used with single sided trigger (5-pack).



### **SG-RS51-STRPNY2-10**

RS5100 spare nylon finger straps single sided trigger (10-pack).



# Trigger Options

## Double Trigger



### SG-RS51-TRGDS-01:

- Durable materials which resist wear with no use of fabric.
- Ambidextrous, for right and left hand mounting without removal or rotation.
- Long trigger lifecycle (millions of presses)



Play video

## Alternative Versions



### SG-RS51-TRGDU-01

Double Sided trigger w/  
USB-C

Charge battery using a  
USB-C cable without the  
use of a charge cradle.



### SG-RS51-TRGDV-01

Double Sided trigger w/  
Vibration

Provides the user with  
haptic feedback while  
scanning.

# Trigger Options

## Back of Hand Mount



**SG-RS51-BHMT-01**

Back of Hand mount.



**SG-RS51-BHSTP-01**

Spare Hand Strap

- Mount is NOT a glove. Can be worn without gloves or over standard, low-cost gloves.
- Durable materials which resist wear – only the strap is fabric.
- Long trigger lifecycle (millions of presses).
- One-size-fits-all and ambidextrous, so customers don't need to buy right / left hand and small / medium / large versions.
- Allows swapping of spare batteries for back to back shifts.

# Trigger Options

## Enterprise Hand Mount



Hand Mount



Hand Wrap

- A perfect fit for every worker, with small, medium and large sizes for right and left hands
- Adjustability of both the position of the scanner on the back of the hand and the aiming angle of the scanner
- Ability to remove the hardware components (mount, connectors and trigger) from the fabric hand wrap, to reduce recurring costs in comparison to competitive mounts with integrated electronics
- Ability to wash the fabric hand wrap (after removal of the hardware components) to improve hygiene and reduce cross-contamination when used as a shared accessory
- Backward compatibility with existing RS5100 wearable scanners. Current RS5100 scanners with finger trigger, lanyard or back of hand mount can be adapted to the Enterprise Hand Mount in seconds without tools or special adapters

# Trigger Options

## Enterprise Hand Mount Part Numbers

### RS5100 with Enterprise Hand Mount

RS51B0-LBRLWR	RS5100 Enterprise Hand Mount, SE4710, Standard Battery, Right Hand, Large
RS51B0-LBLLWR	RS5100 Enterprise Hand Mount, SE4710, Standard Battery, Left Hand, Large
RS51B0-LBRMWR	RS5100 Enterprise Hand Mount, SE4710, Standard Battery, Right Hand, Medium
RS51B0-LBLMWR	RS5100 Enterprise Hand Mount, SE4710, Standard Battery, Left Hand, Medium
RS51B0-LBRSWR	RS5100 Enterprise Hand Mount, SE4710, Standard Battery, Right Hand, Small
RS51B0-LBLSWR	RS5100 Enterprise Hand Mount, SE4710, Standard Battery, Left Hand, Small
RS51B0-TBRLWR	RS5100 Enterprise Hand Mount, SE4770, Standard Battery, Right Hand, Large
RS51B0-TBLLWR	RS5100 Enterprise Hand Mount, SE4770, Standard Battery, Left Hand, Large
RS51B0-TBRMWR	RS5100 Enterprise Hand Mount, SE4770, Standard Battery, Right Hand, Medium
RS51B0-TBLMWR	RS5100 Enterprise Hand Mount, SE4770, Standard Battery, Left Hand, Medium
RS51B0-TBRSWR	RS5100 Enterprise Hand Mount, SE4770, Standard Battery, Right Hand, Small
RS51B0-TBLSWR	RS5100 Enterprise Hand Mount, SE4770, Standard Battery, Left Hand, Small

### Mount and Wrap

SG-RS51-HNMTRL-01	Enterprise Hand Mount for RS5100, Right Hand Large, Includes Mount and Hand Wrap
SG-RS51-HNMTLL-01	Enterprise Hand Mount for RS5100, Left Hand Large, Includes Mount and Hand Wrap
SG-RS51-HNMTRM-01	Enterprise Hand Mount for RS5100, Right Hand Medium, Includes Mount and Hand Wrap
SG-RS51-HNM TLM-01	Enterprise Hand Mount for RS5100, Left Hand Medium, Includes Mount and Hand Wrap
SG-RS51-HNMTRS-01	Enterprise Hand Mount for RS5100, Right Hand Small, Includes Mount and Hand Wrap
SG-RS51-HNM TLS-01	Enterprise Hand Mount for RS5100, Left Hand Small, Includes Mount and Hand Wrap

### Hand Wrap Only

SG-RS51-HNWPRL-01	Spare Hand Wrap for RS5100, Right Hand Large
SG-RS51-HNWPLL-01	Spare Hand Wrap for RS5100, Left Hand Large
SG-RS51-HNWPRM-01	Spare Hand Wrap for RS5100, Right Hand Medium
SG-RS51-HNWPLM-01	Spare Hand Wrap for RS5100, Left Hand Medium
SG-RS51-HNWPRS-01	Spare Hand Wrap for RS5100, Right Hand Small
SG-RS51-HNWPLS-01	Spare Hand Wrap for RS5100, Left Hand Small

# Trigger Options

## Lanyard



### SG-RS51-LNYD-01

- Single, large trigger button for handheld scanning



Play video

## Additional accessories



### SG-RS51-RLYD1-01

Retractor with Magnetic Recoil, For Use with Lanyard Trigger, Includes Adjustable Cord for Wearing Around the Neck

- Allows lanyard to be worn around the neck or on the hip





**BSR idware GmbH**

Jakob-Haringer-Str.3

A-5020 Salzburg

<https://www.bsr.at>

[sales@bsr.at](mailto:sales@bsr.at)

# RS4000 / RS5000 / RS6000

## SOFT GOODS

# Soft-Goods

## RS4000 / RS5000 Ring Scanner

### Spare Accessories for RS4000 and RS5000 Ring Scanners



#### **SG-NGRS-SFSVS-01R**

RS4000 / RS5000 Standard Spare  
Finger Strap (Single Pack, 6" length)



#### **SG-RS419-FGSTP-02R**

RS4000 / RS5000 Extended Spare  
Finger Strap (Single Pack, 7.8" length)



#### **SG-NGRS-SFRVPD-05**

RS5000 Replacement Velcro Pads  
for Attaching RS5000 Power Buffer  
to WT41N0 Wrist Mount  
(Pack of 5 units)



#### **SG-NGRS-TRGASR-01R**

RS4000 / RS5000 Replacement  
Trigger Assembly

# Soft-Goods

## RS6000 Ring Scanner



**BSR idware GmbH**  
Jakob-Haringer-Str.3  
A-5020 Salzburg  
<https://www.bsr.at>  
[sales@bsr.at](mailto:sales@bsr.at)

### Spare Accessories for RS6000 Ring Scanner



#### **SG-NGRS-STRPKV-10**

RS6000 Spare velcro finger straps for trigger configuration (pack of 10 units). Order buckles SG-NGRS-STBKLV-10 separately.



#### **SG-NGRS-TRGA-01**

RS6000 replacement trigger swivel assembly for use with Velcro straps. Order finger straps SG-NGRS-STRPKV-10 and buckles SG-NGRS-STBKLV-10 separately



#### **SG-NGRS-STRPNY-10**

RS6000 spare nylon finger strap for triggered configurations with cam buckle (10 pack).



#### **SG-NGRS-TRGA-02**

RS6000 replacement trigger swivel assembly for use with nylon straps. Order finger straps SG-NGRS-STRPNY-10 separately



#### **SG-NGRS-STBKLV-10**

RS6000 Spare buckles for velcro finger strap (pack of 10 units) Order velcro finger straps separately.



#### **SG-NGRS-CMPD-01**

RS6000 Replacement comfort pads. Pack includes front and back comfort pads.