



**BSR idware GmbH**  
Jakob-Haringer-Str.3  
A-5020 Salzburg  
Web: [www.bsr.at](http://www.bsr.at)



**ZEBRA**

## **Zebra ZT600 Series High-Performance Industrial Printers**

**THE NEXT GENERATION XI SERIES, NOW WITH  
MORE INTELLIGENCE AND INDUSTRIAL BRAWN**

© 2017 ZIH Corp. and/or its affiliates. All rights reserved. ZEBRA and the stylized Zebra head are trademarks of ZIH Corp., registered in many jurisdictions worldwide. All other trademarks are the property of their respective owners.



## AGENDA

- Introducing the ZT600 Series
- Features and benefits
- Applications
- Certified Supplies
- Global services
- Your trusted partner





INTRODUCING

# ZT600 SERIES

HIGH-PERFORMANCE INDUSTRIAL PRINTERS



## Advancing the Legacy of the *Xi* Series

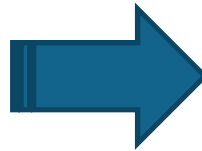
- The ZT600 Series is available in 4" and 6" print widths with optional UHF RFID:
  - The ZT610 replaces the 110Xi4 and R110Xi4
  - The ZT620 replaces the 140Xi4 and 170Xi4



110Xi4



170Xi4



ZT610



ZT620

## The Greatest Feature Set of Any Zebra Stationary Printer Series



**Combines rugged durability with  
future-facing technology**

**Features improvements in small-label  
printing, remote management and  
troubleshooting**

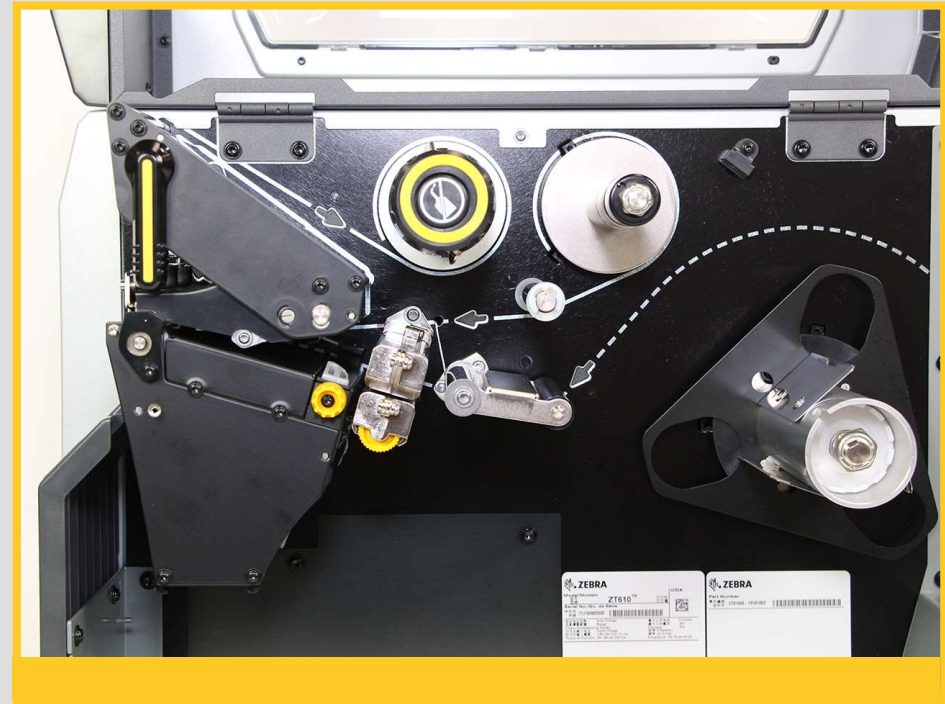
# FEATURES AND BENEFITS





## Designed to Meet Your Needs Today, Tomorrow and for Years to Come

- 24/7 reliability in the harshest conditions
- Micro-Consistent Printing for small labels
- User-friendly design to streamline operations
- Highly adaptable, future-ready platforms
- Expanded operational visibility and control



## Maintain the 24/7 Reliability of the *Xi* Series

### All-metal structural components

Withstand extreme temperatures, dust, moisture and more

### High-quality print mechanisms and internal components

Ensure superior quality, speed and reliability

### Built-in thermal management

Eliminates vents and fans to block dust and debris



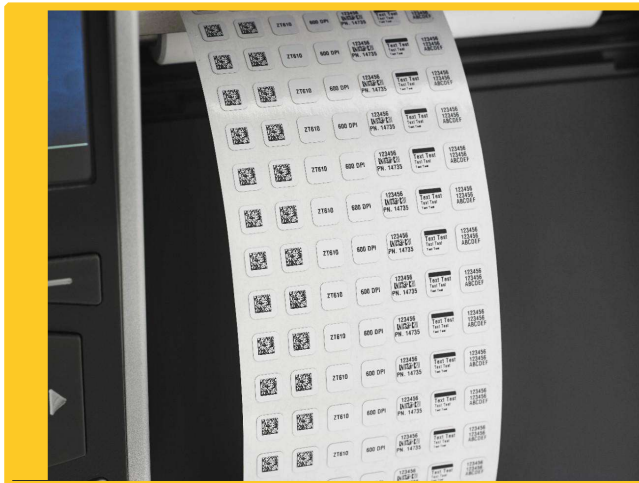


## Micro-Consistent Printing for Top-Quality Small Labels



**600 dpi printing for labels as small as 3 mm**

Ideal for applications like circuit boards, chips and miniature components



**Highly precise registration**

Ensure every label is accurately printed—from the first label to the last

## User-Friendly Design for Easy Day-to-Day Operation

### Simple side-loading of media and ribbon

Reduces training requirements and increases productivity

### Guided media paths

Change color when errors occur to help locate and resolve issues

### Color graphic display

Streamlines use with icon menu system and local language support

### Highly visible color display

Turns red in error mode to show status, even from a distance



## Plug-and-Play Upgradeability

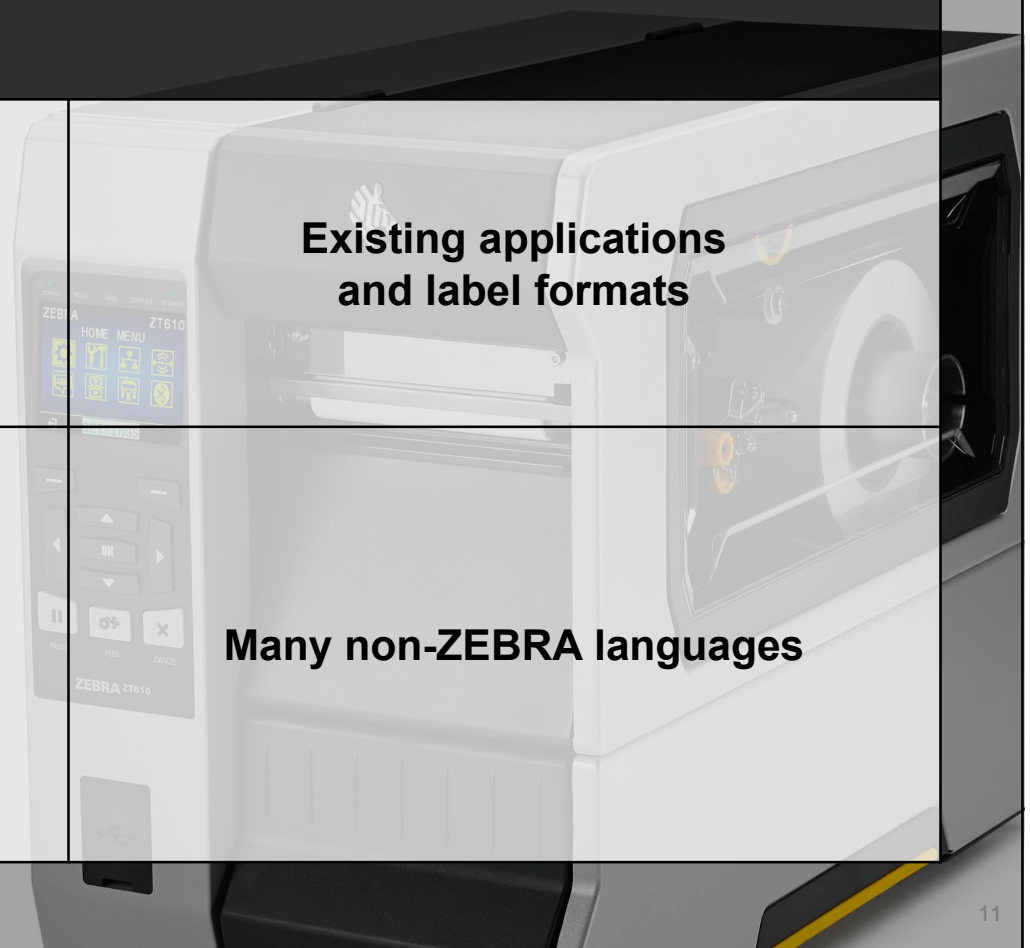
**Backwards compatible with:**

**Zebra Xi4 Series Printers**

**Existing applications  
and label formats**

**Existing printer languages  
ZEBRA, ZPL**

**Many non-ZEBRA languages**



## Adaptable Design to Meet Your Evolving Needs

### Advanced RFID encoding capabilities

Easy to install and use when you're ready to upgrade

### Two USB host ports

Connect to a wide range of peripheral devices

### Field-installable media handling options

Expand your printer capabilities if and when you need to



## Comprehensive Connectivity for Flexible Configuration

### Standard connectivity

Serial, USB, Gigabit Ethernet, dual USB Host and Bluetooth®

### Two open communication slots for optional connectivity

Parallel, 802.11a/c, Applicator Port, IPv6 and Bluetooth LE





## Link-OS® for Integration, Management and Visibility



### Cloud Connect

Securely access and control critical operations anytime, from anywhere



### Profile Manager

Monitor networked Link-OS printers from a single user-friendly, browser-based interface



### Virtual Devices

Emulates common printer languages for hassle-free integration



### Print Touch

Set application-specific parameters from an Android device for efficient, scalable deployment

### Dashboards

Provides advanced, in-system diagnostics, guided instructions and feedback

### Link-OS Connectors

Easily integrate networked printers into AirWatch or SOTI Device Management Systems



# APPLICATIONS



## Ideal for a Wide Range of Industrial Applications



Standard, harsh-  
environment and  
precision  
manufacturing

Warehousing and  
back-office  
applications

Transportation & logistics  
shipping labels

## From Standard Manufacturing to Harsh Industrial Conditions

### What you need:

#### Standard:

- Product/pallet labeling for shipping, receiving, cross-docking or automated manufacturing

#### Harsh Conditions:

- Labeling in harsh conditions like food and beverage or cold storage
- Rust and temperature resistance

### What the ZT600 Series offers:

- 24/7 reliability
- Top print quality, consistency and speed across a variety of label types
- Withstands the toughest environments
- Highly precise print registration
- Full backwards compatibility with previous generation Zebra industrial printers
- Withstands extreme temperatures, sawdust, salt, sugar, oil, wet washdowns and debris from labels, cardboard and manufacturing processes
- Absorbs impact from falling, being hit by forklifts, slammed open or shut

## Micro-Consistent Label Printing

### What you need:

- Exceptional clarity and precision
- Micro-labeling for electronic components, jewelry and more
- Medical labeling for lab/testing equipment, test tubes and vials
- Cosmetics and pharmaceutical labels

### What the ZT600 Series offers:

- Highly precise registration and print line adjustment
- Print labels as small as 3 mm
- The highest print quality across a variety of label types, shapes and sizes
- Long-lasting, environmentally resistant (thermal transfer)



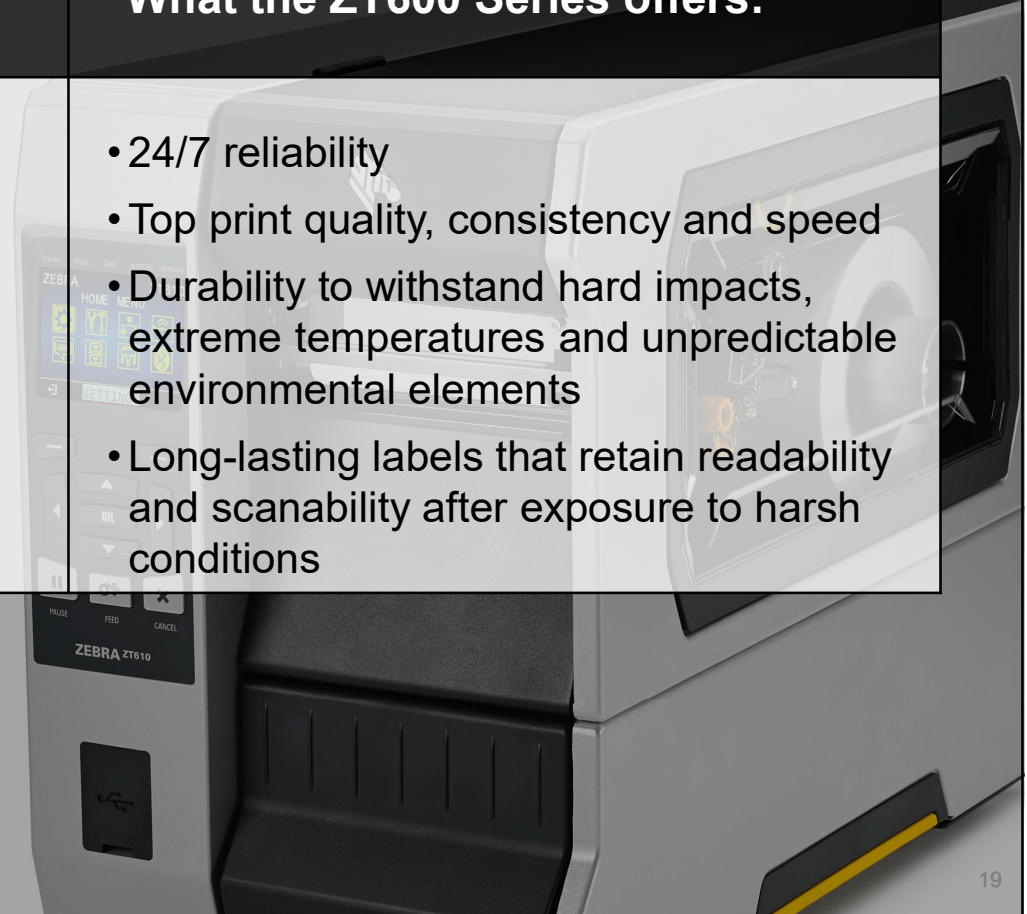
## Transportation & Logistics and Warehousing

### What you need:

- Reliable pallet and shipping labels for docking bays and material yards

### What the ZT600 Series offers:

- 24/7 reliability
- Top print quality, consistency and speed
- Durability to withstand hard impacts, extreme temperatures and unpredictable environmental elements
- Long-lasting labels that retain readability and scanability after exposure to harsh conditions



# **ZEBRA CERTIFIED SUPPLIES**





## Rest Assured With Zebra Certified Supplies

### Top Quality for Top Performance

Printing supplies are rigorously tested for print quality, printer compatibility and application flexibility.

### Consistency Means Convenience

We always use the same raw materials, so you always get the same quality and performance.

### Avoid Common Problems

- No adjusting systems between rolls
- No reprinting due to poor readability or scanability
- No worrying about incompatible media damaging printers

**GLOBAL  
SERVICES**



# Operational Visibility Service (OVS) & Asset Visibility Service (AVS)



Track and analyze  
printer health,  
performance and  
usage in real time

Quickly identify  
issues, assess  
solutions and  
take action

Compatible with existing mobile  
device management software

## Zebra OneCare

**Keep Your ZT600  
Series Printer  
Operating at Peak  
Performance**

**Upgrade to the ultimate in post-deployment support with multi-year coverage from day one**

**Tiered service plans to meet your support needs and budget**

- Normal wear and tear plus accidental breakage repair coverage with OneCare
- Essential and Select include telephone and software support
- Upgrade to OneCare Select to add next-business-day dispatch of replacement devices, 24/7 Level One support and more

**Benefits**

- Maximize device uptime
- Unparalleled “from the manufacturer” expertise
- Outstanding value—eliminates unexpected repair costs
- Enables IT to focus on more strategic initiatives



Zebra

**A TRUE PARTNER**



# Zebra Facts

Channel partners in **more than 100 countries**

Customers include **more than 95 percent** of all Fortune 500 companies

**~7000**  
employees  
worldwide

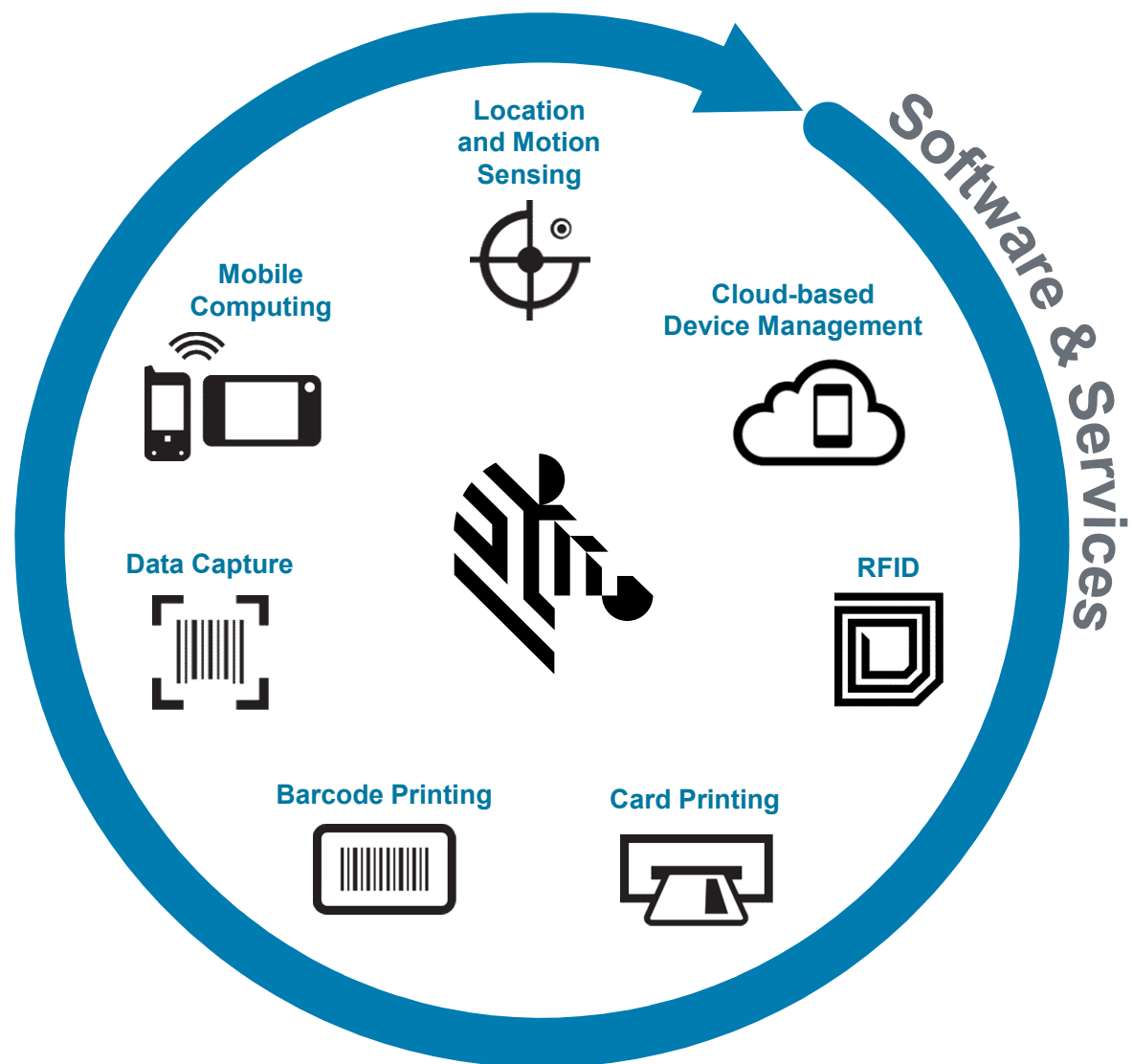
**122+** offices  
across 81  
countries

**~\$4.3**  
billion  
market cap

**4200+**  
US &  
international  
patents issued  
and pending



## Key Technology Offerings





**QUESTIONS?**

