

# LX900

## COLOR LABEL PRINTER



**PRIMERA**  
TECHNOLOGY, INC.

[www.primeralabel.com](http://www.primeralabel.com)

# LX900

COLOR LABEL PRINTER

## Print Full-Color Labels Fast and On-Demand!

LX900 is Primera's newest, fastest and most economical to operate color label printer. It utilizes the latest in high-resolution inkjet technology to print brilliant, colorful labels for your products, boxes and packaging. Individual ink cartridges for each color let you replace only the colors that need replacing. You'll save time and money on every job you print.

Printed labels can include photos, graphics, illustrations and text – even high-resolution linear or two-dimensional bar codes. Print labels when and where you need them in just the quantities you can actually use.

## Outstanding Print Quality

LX900 incorporates the most advanced inkjet technology ever offered in a desktop label printer. Called Primera Imaging Perfection™, this all-new printing technology delivers razor-sharp text, graphics and the most photo-realistic printing possible.

Color droplet size is just 4 pL and black is 5.5 pL – the smallest available on an industrial-grade color label printer. Print resolution is up to 4800 dpi versus just 1200 dpi on other printers.



## The Fastest Desktop Label Printer in the World!

With LX900, you'll produce full-color labels at up to 4.5" per second in draft mode. Short runs are printed fast and efficiently, helping you to increase the production of your products. You can even operate several LX900 printers from one PC as your production volumes grow. Whether you print just a few labels at a time or thousands, they'll be printed at speeds you probably never before thought was possible from a desktop label printer.

## Economical to Operate and Maintain

LX900 has individual inks for Cyan, Magenta, Yellow and Black. This means you only need to replace the ink cartridge that have been depleted instead of the entire cartridge, saving money on every label you print. You'll also be printing "greener" by not wasting ink if your designs use more of one color than another.

The print head is designed to be semi-permanent. If a replacement is ever needed, simply snap it in and out of the printer – no tools required.



## A Wide Variety of Substrates

LX900 prints onto many different inkjet-qualified label and tag materials, including Primera's exclusive TuffCoat Extreme™ white and clear polyester and white BOPP. Printed labels are highly water, scratch, smudge and tear-resistant. They've been specifically engineered for best-in-class performance with the inks used in Primera's LX-Series Color Label Printers.

Economical water-resistant paper labels are available in high-gloss, semi-gloss and matte finishes. Dozens of popular sizes are in-stock and ready for immediate shipment. Custom sizes are also available.



## Many Applications

LX900 produces gorgeous, professional-quality prime labels for all of your short-run, specialty products. But it is also perfect for a host of other uses, including:

- Proofing before going to press on longer runs
- Full-color box-end labels with all of the required bar codes
- Test marketing
- Contract manufacturing
- Private label goods
- Promotional labels

## The Best Industrial Label Printer

With its fast print speeds, incredible print quality and affordable acquisition and per-label costs, Primera's LX900 is simply the best desktop color label printer you can buy. Your products deserve labels that are so easy to produce, cost so little and look this great!

## LX900 is perfect for labeling all of these products and more:

- Baked goods
- Candles
- Candy and confectionary
- Cleaning supplies
- Chemicals
- Coffee and tea
- Cosmetics
- Desserts, pies and cakes
- Gifts and gift baskets
- Gourmet and specialty foods
- Honey
- Jams, jellies and preserves
- Juices and ciders
- Nuts
- Oils (essential and olive)
- Organic and natural foods
- Personal care products
- Pet foods
- Produce
- Sauces and salsas
- School stickers
- Soaps and shampoos
- Spices and herbs
- Syrups
- Vitamins, supplements and nutraceuticals
- Water bottles
- Wine, beer and spirits





# Primera's Label Accessory Products



**AP362**  
LABEL APPLICATOR

## AP-Series Label Applicators

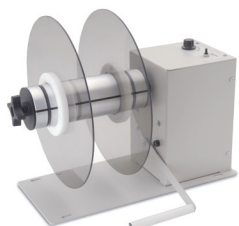
are the perfect semi-automatic labeling solution for cylindrical containers as well as many tapered containers including bottles, cans, jars and tubes.



**DX850**  
LABEL DISPENSER

## DX850 Label Dispenser

automatically peels and presents self-adhesive labels one at a time. It replaces manual label peeling, making your production line faster and more efficient.



**RX-12**  
Label Rewinder

## RX-12 Label Rewinder

makes it easy to rewind large quantities of labels. It's perfect for use with virtually any thermal, thermal transfer and inkjet-based desktop label printer, including Primera's popular LX-Series Color label Printers.

## The Price/Performance Leader



**Primera Technology** is one of the world's leading manufacturers of specialty printers. We've built well over one million inkjet, thermal transfer and dot matrix printers throughout our history. You can be confident that your new Color Label Printer from Primera will give you years of reliable performance. Best of all, the LX900 delivers truly professional results at an affordable price!

## Technical Specifications

<b>Print Method:</b>	Thermal inkjet with Primera Imaging Perfection enhancements
<b>Print Resolutions:</b>	Up to 4800 dpi
<b>Print Speeds:</b>	Draft Mode: 4.5" per second Normal Mode: 1.8" per second High Quality Mode: 0.8" per second
<b>Print Head:</b>	Semi-permanent, user-replaceable
<b>Inks:</b>	Individual ink cartridges for Cyan, Magenta, Yellow and Black
<b>Colors:</b>	16.7 million
<b>Color Matching:</b>	Z-Color™ Color Matching Software
<b>Max. Print Width:</b>	8" (203mm)
<b>Media Width:</b>	8.127" (206mm)
<b>Media Types:</b>	Roll-fed pressure-sensitive labels and roll-fed tags
<b>Media Sensing:</b>	Moveable see-through sensor for die-cut labels; reflective sensor for labels and tags with black stripe; can use continuous and pre-printed labels and tags
<b>Supply Roll:</b>	6" (152mm) maximum diameter on 3" (76mm) core.
<b>Ink Level Warning:</b>	Calculates actual number of prints remaining based upon ink usage of graphics being printed (patent-pending)
<b>Indicator Lights:</b>	Power, Pause, Ink
<b>Controls:</b>	Pause, Feed, Unload
<b>Operating Systems:</b>	Windows XP®, Vista® and Windows 7 Mac OS X v10.5 or higher (Coming Soon)
<b>Data Interface:</b>	USB 2.0; External Control Port
<b>Label Design Software:</b>	NiceLabel™ SE Primera Edition included. Can also be used with most other popular label design and graphics software programs
<b>Electrical Rating:</b>	12VDC, 5.0A
<b>Power Requirements:</b>	100-240VAC, 50/60 Hz, 60 watts
<b>Certifications:</b>	UL, UL-C, CE, FCC Class B
<b>Weight:</b>	36.5 lbs. (16.6 kg)
<b>Dimensions:</b>	17.25"W x 9.1"H x 17.25"D (438mmW x 231mmH x 438mmD)



**BSR idware GmbH**  
Jakob-Haringer-Str.3  
A-5020 Salzburg  
Web: [www.bsr.at](http://www.bsr.at)



Two Carlson Parkway North  
Plymouth, MN 55447- 4446 U.S.A.  
(800) 797-2772 (U.S.A. and Canada only)  
(763) 475-6676 Fax: (763) 475-6677  
Internet: [www.primeralabel.com](http://www.primeralabel.com)  
E-mail: [sales@primeralabel.com](mailto:sales@primeralabel.com)