

**CIPHER LAB**  
Smarter

**BSR** IDWARE

**BSR idware GmbH**  
Jakob-Haringer-Str.3  
A-5020 Salzburg  
<https://www.bsr.at>  
[sales@bsr.at](mailto:sales@bsr.at)



# RK95

series



# Android Operation Brings the Next Generation of Productivity and Efficiency

Visible LED indicators represent scanning result status, wireless connection, charging level and more.

4.3" touch display ensures readability and future adoption of touch-based applications.



29/38/52 keypad options. Terminal Emulation keypads support TN and VT systems.



Optional 13 MP camera embedded with specific angle to prevent it from being blocked by user's hand while gripping pistol or taking photos.

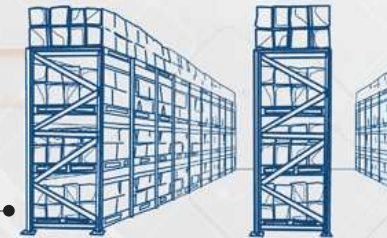


2x2 MU-MIMO technology with increased data capacity and transmission speed.

Versatile reader options of laser, 2D imager, mid-range 2D imager, and extended-range 2D imager fulfill different user demands in reading distance.



Maximum long distance barcode reading over 21 meters



In-house curved shape makes it easy to grip.



Min. 395

Lightweight and pistol designs to guarantee all-day comfortability.



3000  
6000

Two battery options with hot-swappable and easy-removable features allow one-hand operation.



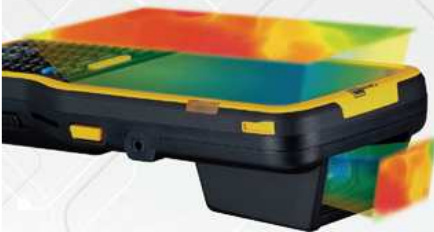
## Operation temperature down to -30°C

Comes with temperature sensor and heater control software allows user to automatically turn on/off heater based on surrounding environment. For example, set to turn on heater under -10°C and turn off above 20°C.

Heaters embedded in touch screen and scan window to ensure fog-free display and frost-free scanning.

Ice-resistant materials built into the product itself to prevent potential damage caused by prolonged operation in low temperature environments.

Freezer 4,300 mAh battery optimized for low temperature environment, min. 7 working hours at -30°C.





# Android Operation Brings the Next Generation of Productivity and Efficiency



CipherLab's RK95, the next generation of the 9700, brings the productivity and efficiency to the next level. Its advanced mobile computing platform and superior wireless options extend performance in the warehouse environment. With the latest Android operating system, the RK95 has fulfilled larger data collection with multiple keypad options and intensive scanning usage with versatile reader options. It not only fulfills traditional users' legacy warehouse applications but also new applications from indoors to outdoors.

## Accurate and Upgraded Features with Google Certification

CipherLab's RK95 is a powerful handheld terminal that steps up the data collection game in the warehouse environments. Data processing is made fast and easy with a powerful processor. Modernized terminal emulation and physical keypad options make data collection easy for legacy and new users. Along with Google certification, the RK95 is a powerful handheld terminal that enhances workforce productivity and daily operations. Superior Wi-Fi coverage keeps multiple workers connected simultaneously, while 4G/LTE supports new applications from indoors to out. Its powerful and upgradeable mobile computing platform operates with higher standards and security. With durable designs and resourceful data capture, the RK95 is surely an investment that is smart and cost effective for your business.



## Superior Performance with Advanced Certified Mobile Computer Platform

CipherLab RK95 is powered by the octa-core 2.2 GHz processor with 4 GB RAM/64GB Flash memory. Your staff can process the data in an instant without any interruptions. Moreover, its latest Android 9.0 operating system is upgradeable to one later version. The RK95's intuitive interface allows your staff to have less training and access the most up-to-date Android applications. It is also certified by Google's GMS and AER programs to ensure applications operate smoothly with elevated standards. Regular quarterly security updates are guaranteed for five years after its launch. Zero-touch enrollment with AER makes large scale Android deployment across multiple devices simple.



## Reliable Transmission Increases Workforce Productivity

The RK95's reliable transmissions include IEEE802.11 a/b/g/n/ac of dual band and MIMO 2x2 technology. With MIMO 2x2, the RK95 offers superior Wi-Fi coverage and high-speed data throughput that keeps multiple workers connected simultaneously. With the ability to fast roaming in 1 seconds and reconnect in 7 seconds, the RK95 can handle big data transmission without disturbances. Workers can enjoy a more reliable wireless network regardless of location without interferences. The expandability of the optional 4G/LTE connectivity provides workers with real-time enhanced usage outside the four walls for warehouse storage, yard management and whole logistic operations. It also allows workers to upload and download data with location base applications such as proof of delivery and optional route planning.



## Durable Designs that Outlast a Full Shift

The CipherLab RK95's IP65 rating, 1.8 m drop resistance and 1,000 tumbles at 1 m help support productivity with full protection from water, dust and accidental drops. Workers can feel secured when they work, knowing RK95's Corning Gorilla Glass improves damage resistance and toughness against chips and scratches. The keypad, with quality printing, also passed a durability test of 1 million presses. The RK95 can even extend its productivity into the cold storage or freezers and prevent device condensation. Along with all that durability, workers can operate for more than 8 working hours with the hot-swappable 3,000 mAh or 6,000 mAh battery, and more than 7 working hours with freezer battery.



## Resourceful Data Capture

CipherLab RK95's versatile reader options, laser, 2D imager, mid-range 2D imager and extended-range 2D imager, give you long distance barcode reading capabilities from 7.6 cm to over 21.4 meters. The RK95 has the same great modularity of the 9700 series for easy field replacement and on-site services. Additionally, it has the new LED indicator for good or bad scanning. Workers can also capture detailed photos for records of the cargo conditions and the verification process with its optional 13 MP camera. RK95's NFC ability, available on request, helps to read NFC smart tags or emulate contactless cards for access control.



## Easy Data Collection with Modernized Terminal Emulation and Physical Keypads

CipherLab RK95 provides a 38-key numeric and 52-key alphanumeric physical keypad option with CipherLab Terminal Emulation compatible with VT and TN systems. Additionally, the RK95's touch base operation can also support Android intuitive and interactive applications. Maximize simplicity with your choice of keypads or touch input for Terminal Emulation/Android Apps now or in the future. The RK95's 4.3-inch WVGA display also increases the readability and viewing area for your staff. It provides the best in-class indoor/outdoor readability and data input flexibility. Users can interact with the screen, regardless of the display is wet, with a finger, gloves or a stylus.

## Elaborate Utilities and Software Solutions



CipherLab's RK95 supports more than just 3<sup>rd</sup> party software. It also supports CipherLab self-developed software utilities to boost your operation.

- With **CipherLab ReMoCloud**<sup>®</sup>, certified by Google EMM (Enterprise Mobility Management), provides solution to manage CipherLab's Android devices via internet anytime and anyplace. Supported by Google Zero-touch enrollment, ReMoCloud<sup>®</sup> allows administrators to track, monitor and manage applications from a central administrated area.
- CipherLab Terminal Emulation** supports systems of VT, TN3270 and TN5250 with full screen operation for efficient inventory management. With intuitive user interface, Wi-Fi status, battery capacity and custom font size/color, your business will undoubtedly save time and energy. Additionally, the **Button Assignment** which allows function key configuration will speed up the work process.
- CipherLab ADC** (Android Device Configurator) makes customized configuration and project setting easy for administrators. These configuration utilities can perform system updates over USB connection or **WMDS** (Wireless Mobile Deployment System). Through **BarcodeToSetting**, you could even facilitate mobile settings by scanning 1D/2D barcodes.



Performance	Operating System	Android 9 (GMS, AER certified with one later version upgradeable capability)
	CPU	Octa-core over 2.2 GHz
	Memory	64GB FLASH / 4GB RAM
	Expansion	Micro SD Slot With SDHC (up to 32 GB) and SDXC (up to 2TB) Support
	SIM/SAM (Available on request)	1 SIM with dust cover
	Operating Power	Standard: Rechargeable 3.7V, 3000 mAh / 6000 mAh Li-ion Battery Cold Storage: Rechargeable 3.7V, 4300 mAh Li-ion Battery
	Working Hours <sup>1</sup>	Standard: Min. 8 working hours (3000 mAh), Min. 10 working hours (6000 mAh) Cold Storage: Min. 7 working hours at -30°C
	Alert	LED indicators for RF, charging status, scanning status (2 circular LED at front and 2 rectangle LED at sides) / Vibrator/ Speaker
Interface Supported	USB 2.0 with OTG	
Wireless Communication	WLAN	IEEE 802.11 a/b/g/n/ac/e/d/h/i/r/k/v/w, IPv4, IPv6, 2x2 MU-MIMO
	WLAN security	WEP, WPA (PSK, TKIP), WPA2 (AES, PSK), WPA-1X (TKIP,EAP-TLS, PEAP), WPA2-1X (AES, EAP-TLS, PEAP), 802.1x (EAP-TLS, PEAP), AES-CCMP, WPI-SMS4, WPS2.0, WAPI, EAP-TTLS (PAP, MSCHAP, MSCHAPv2), PEAPv0-MSCHAPv2, PEAPv1-EAP-GTC and LEAP, EAP-PWD
	WPAN	Class 2 Bluetooth® v5.0 with BR/EDR and Low Energy (BLE) Support
	Bluetooth® profile	GAP, SDP, HSP, SPP, GOEP, OPP, HFP, PAN, A2DP, AVRCP, GAVDP, HID, PBAP
	WWAN (Available on request)	(2G) GSM: 850 / 900 / 1800 / 1900 (3G) UMTS / HSPA / HSPA+: B1,B2,B4,B5,B6,B8,B19 (4G) FDD LTE: B1(2100), B2(1900), Band3(1800),B4(1700), B5(850), B7(2600), B8(900) , B12(700), B13(700), B17(700),B19(800), B20(800),B25(1900), B26(850),B28, B66 (4G)TDD-LTE: Band38, Band39, Band40, Band41(2545MHz~2655MHz)
	GPS (For WWAN only)	GPS, AGPS, GLONASS, BeiDou, Galileo
Data Capture	Barcode Scanning	Standard: Laser / 2D Imager/ Mid-Range 2D Imager / Extended-Range 2D imager Cold Storage: 2D Imager/ Mid-Range 2D Imager / Extended-Range 2D imager
	Camera (Optional)	Autofocus 13 Megapixels with LED flash
	NFC (Available on request)	Supports ISO14443A, ISO14443B, ISO15693, Felica (Peer-to-Peer, Card Reader, Card Emulation)
Physical Characteristics	Display	4.3" WVGA color display, Capacity Touch supports bare / wet / gloved finger and stylus inputs, Corning Gorilla Glass
	Interactive Sensor Technology	Light sensor, Proximity sensor, Motion sensor, E-compass, Gyroscope, Temperature sensor for Cold Storage
	Keypad	38-Key Numeric/Function keypads(29-key is available on request) 52-Key Alphanumeric keypads, Terminal Emulation keypads (TN5250, TN3270 and VT) ,with LED backlight
	Voice and Audio	PTT voice ; Speaker, Microphones with noise reduction and echo cancellation, Bluetooth® headset
	Size (LxWxH)	216 mm x 80 mm x 30 mm
	Weight	Standard: 395 g (3000 mAh) / 445 g (6000 mAh), with 2D imager / 435 g (3000 mAh) / 480 g (6000 mAh), with Extended-Range 2D imager Cold Storage: 455 g, with 2D imager/ 480 g, with Extended-Range 2D imager
	Operating temperature	Standard: -20°C to 50°C / -4°F to 122°F Cold Storage: -30°C to 50°C / -22°F to 122°F
User Environment	Storage Temperature	-30°C to 70°C / -22°F to 158°F
	Humidity (Non-Condensed)	Operating 5% to 95% / Storage 5% to 95%
	Impact Resistance	Standard: 1.8 m / 2.4 m with Rubber Boot, multiple drops onto concrete (MIL-STD-810G), crossing operating temperature Cold Storage: 1.5 m multiple drops onto concrete (MIL-STD-810G), crossing operating temperature
	Electrostatic Discharge	± 15 kV Air Discharge, ± 8 kV Contact Discharge
	Regulatory Compliance	FCC/ BC/CA65/SRRC/CCC/NCC/ BSMI/CE/ WEEE/ RoHS/ REACH/ Erp/ BIS/ WPC/IC/NrCAN/RCM (the regulatory compliance for WWAN model is available on request)
	Development Support	CipherLab API and Android 9 Standard API
Application Software	CipherLab: ReMoCloud®, Wireless Mobile Deployment System (WMDS), Android Device Configurator (ADC), BarcodeToSetting, App-Lock, Button Assignment, Reader Configuration, Signature Capture, Airlock Browser, Mirror Terminal Emulation, Software Trigger Third Party: SOTI MobiControl, Xamarin Binding, iVanti Velocity Terminal Emulator & Browser, AirWatch, Kalipso	
Accessories	Snap-on Cable (USB), Pistol Grip, Rubber Boot, 4-slot Battery Charger, 5-slot Terminal Charging Cradle, Multi-slot Charging Cradle with Battery Charger, Charging and Communication Cradle, Hand Strap, Belt Holster for Device with Pistol Grip, Available on request: 5-slot Terminal Ethernet Cradle, Vehicle Cradle	
Warranty	1 year	

1. Minimum 8 hours. 2D imager scanning per 20 seconds, LCD 50% backlight and speaker on (volume is default) at 25°C, Bluetooth® off / IEEE 802.11 a/b/g/n on. The test is based on one broadcasting packet per second.

## ACCESSORIES



Charging and  
Communication  
Cradle



Snap-on Cable  
(USB)



Rubber boot



Hand strap



Pistol Grip



4-slot  
Battery charger



Multi-slot  
Charging Cradle  
with Battery Charger

